

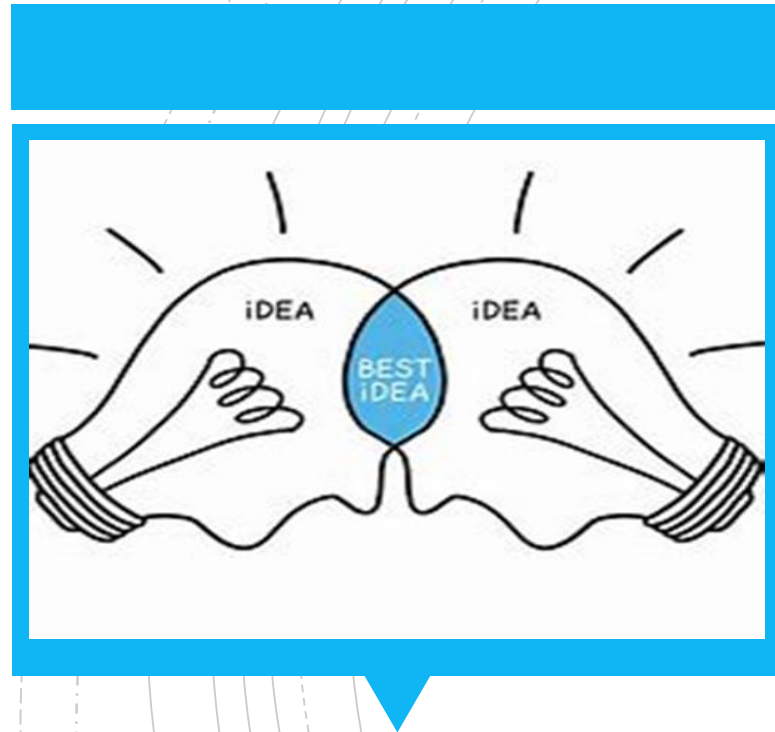
Collaborative Learning: Working together to create a quality learning environment

Paula Beesley

Senior Lecturer in Social Work



LEEDS
BECKETT
UNIVERSITY



- We will explore the rewards for both mentor and student when collaborative learning is facilitated that enables the student to develop their practice through exploration and reflection of their strengths and practice, whilst taking account of their learning needs and how they can best be met.



- Collaborative learning, Sennett (2008) would argue, is based on the student's commitment to learn a skill and the mentor's ability to harness that commitment, support the innate talent, recognise and reward achievement and facilitate the student to work hard to fulfil their full potential.

A blue speech bubble graphic with a white border, containing the word "Discussion".

Discussion

- When first meeting a student, how do you
 - Find about them?
 - Identify their learning needs?
 - Determine areas that they are interested in?



But.....

.....how much do you take account of those issues once the student is on placement?

By frequent reviewing of the student's perspective, learning needs and interests, you will be able to provide a student-led placement learning opportunity.

Discussion

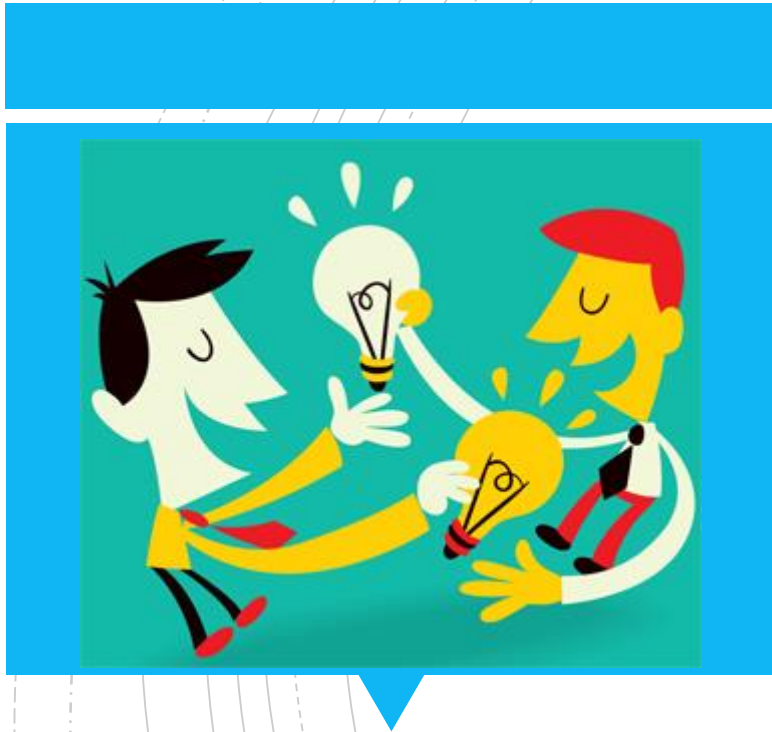
- How do you support a student's development on placement?





The capable
student



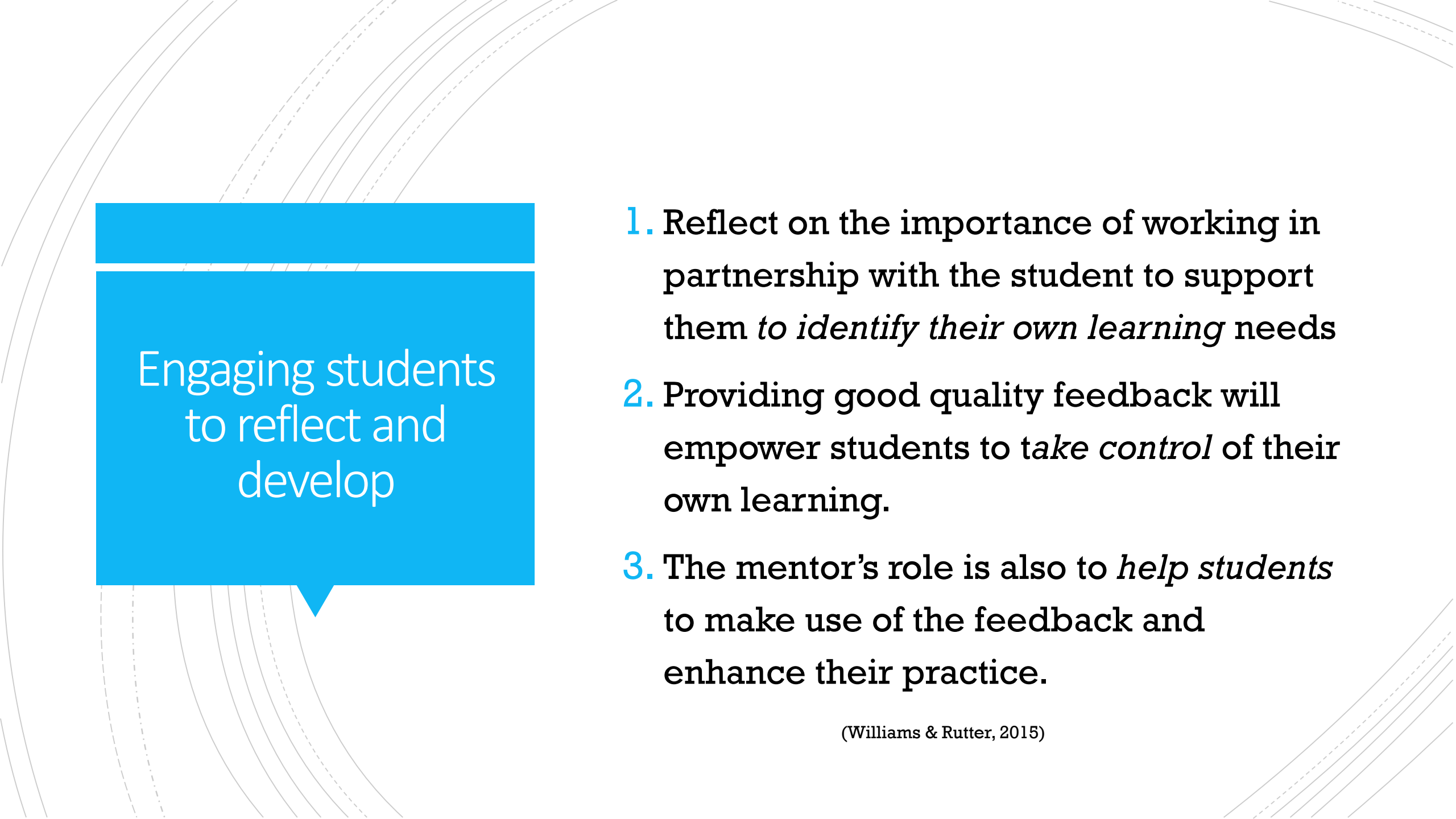


Sennett (2008) proposes *expressive instruction*, where reflective discussion enhances the student's understanding to enhance their practice.

He argues that you, the mentor, need to be open to challenge by the student that will enhance your understanding as well as the student's.

The student who
needs additional
support



The background of the slide features several thin, curved lines in light gray and white, creating a sense of motion and depth. These lines are more prominent on the left side and fade towards the right.

Engaging students to reflect and develop

1. Reflect on the importance of working in partnership with the student to support them *to identify their own learning* needs
2. Providing good quality feedback will empower students to *take control* of their own learning.
3. The mentor's role is also to *help students* to make use of the feedback and enhance their practice.

(Williams & Rutter, 2015)

References

- Sennett, R (2008) *The Craftsman*. Penguin
- Williams and Rutter (2015) *The Practice Educator's Handbook*. Sage

