



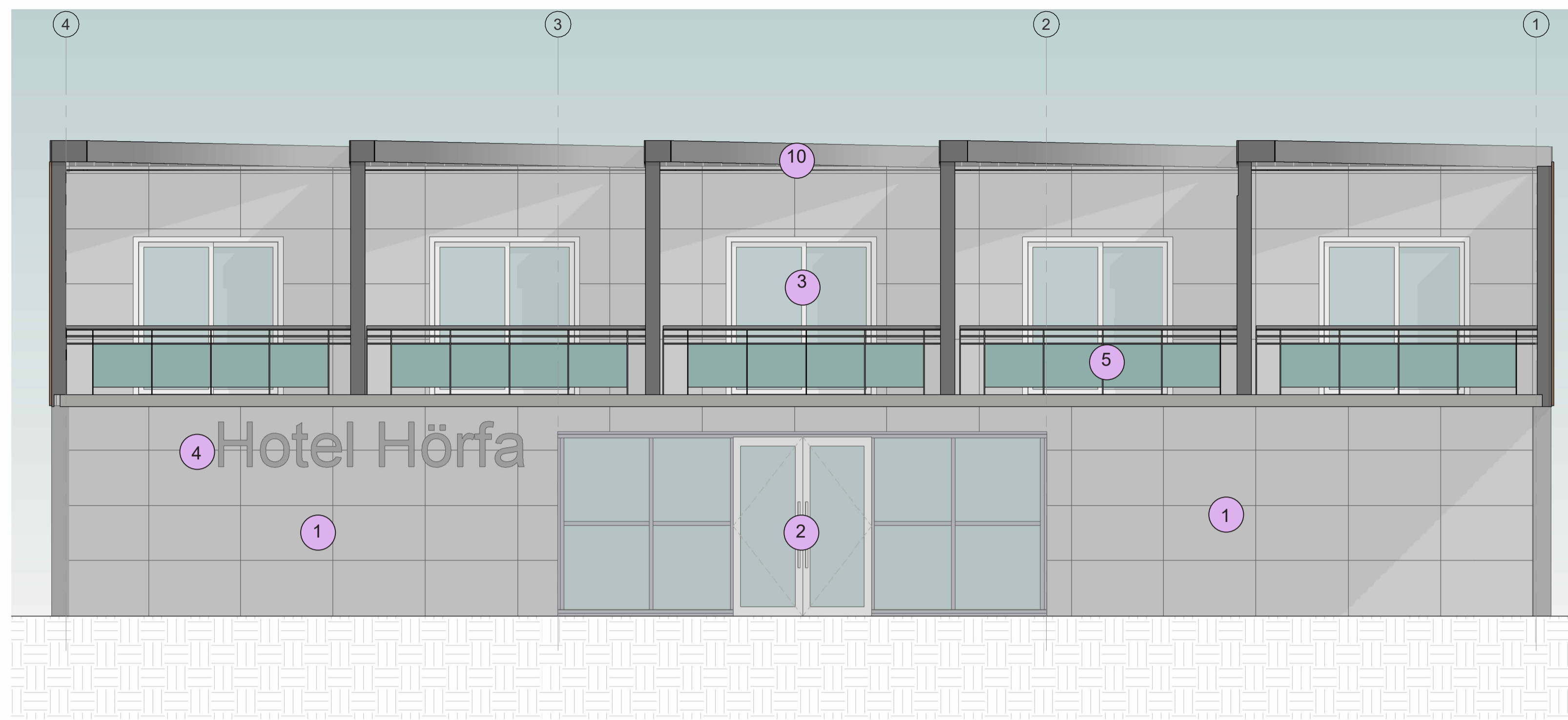
- ① Hotel Höra - Luxury Hotel
- ② Visitor Centre with Viewing Tower
- ③ 15 number car parking spaces including 1 number accessible space
- ④ Raised landscaping zone - Visual buffer
- ⑤ External substation for wind turbines
- ⑥ Wind turbines
- ⑦ Waling paths to be constructed from galvanised steel mesh
- ⑧ 860 Road
- ⑨ Crevis with 8m level difference
- ⑩ Trees consisting of native species:
Rowan (Sorbus aucuparia)
Birch (Betula pendula)
Aspen (Populus tremula)
- ⑪ Wind turbines producing power for buildings



Site Plan
1:500



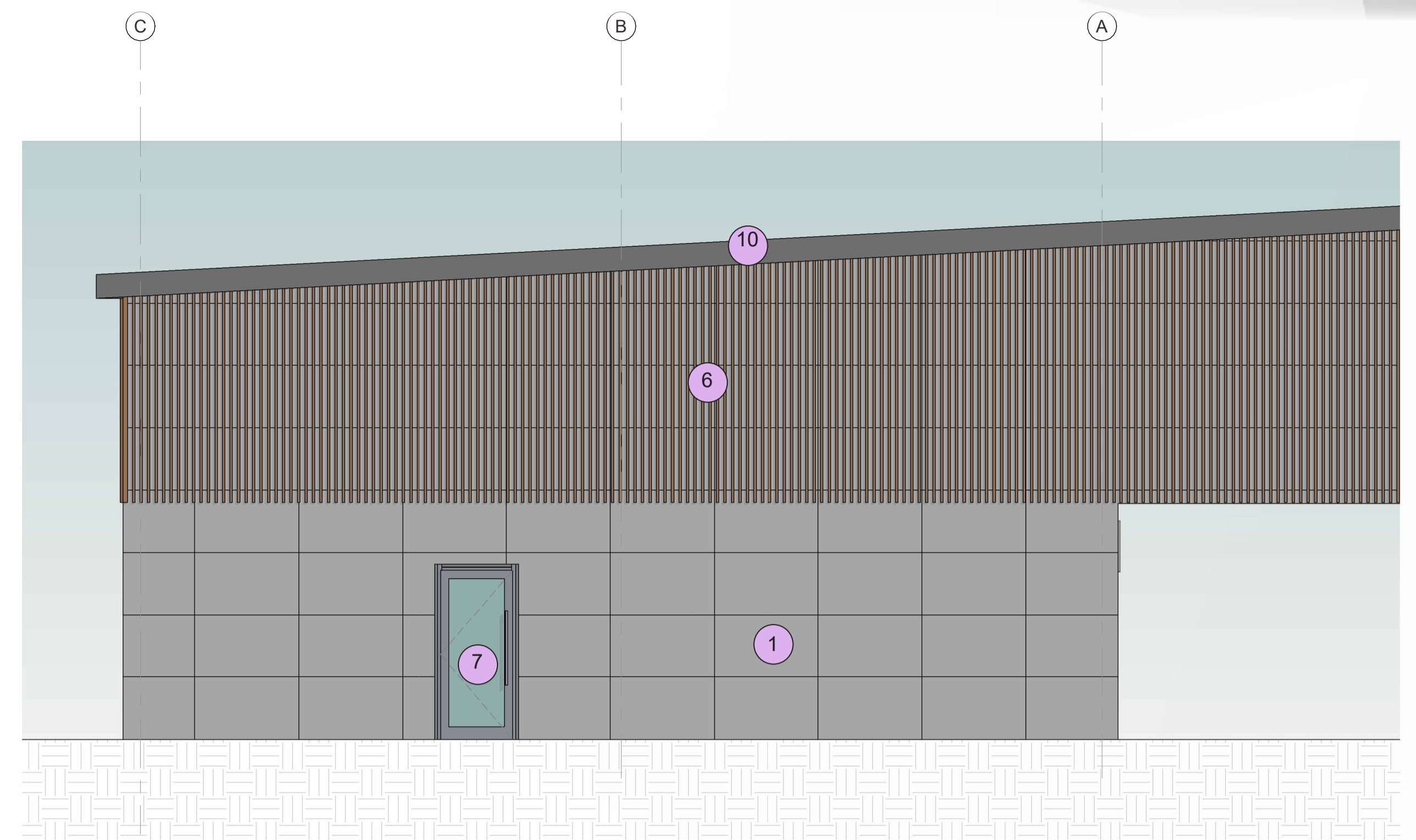
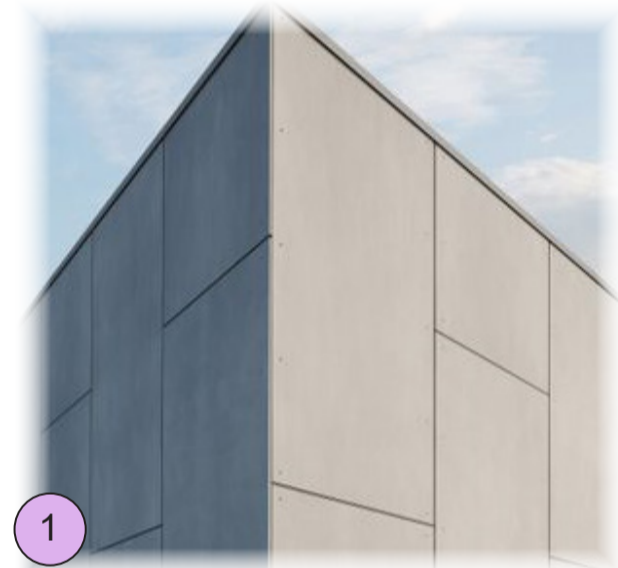
Hotel - Ground Floor Plan
1:50



East Elevation

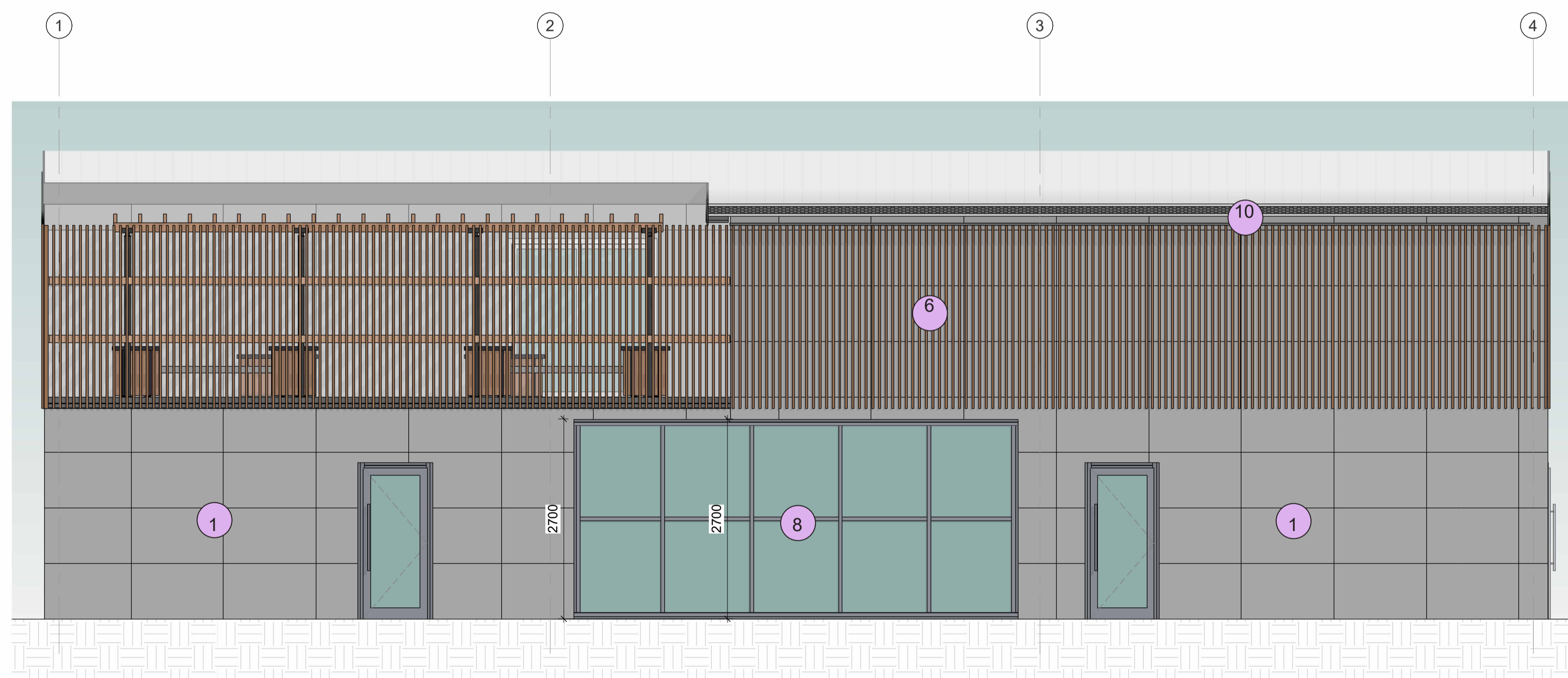
1 : 50

- 1 Fibre Cement Cladding
- 2 Main entrance bi-parting doors in floor to ceiling curtain wall
- 3 Sliding balcony door
- 4 Illuminated hotel signage
- 5 Glazed inset balcony rail
- 6 Timber baffel over cladding
- 7 Glazed final exit door
- 8 Floor to ceiling curtain wall
- 9 Plant room door
- 10 Aluminiumfascias



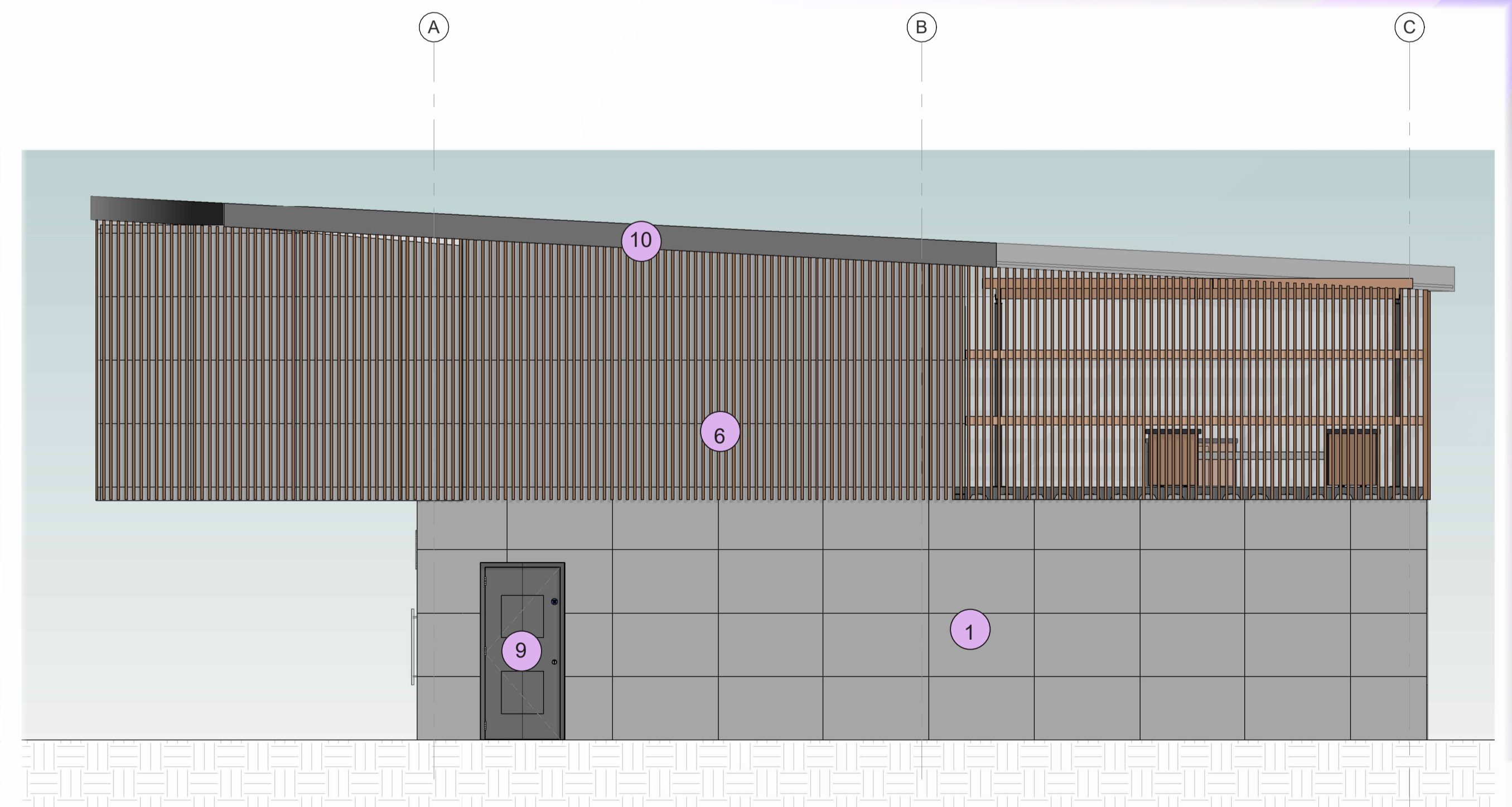
South Elevation

1 : 50



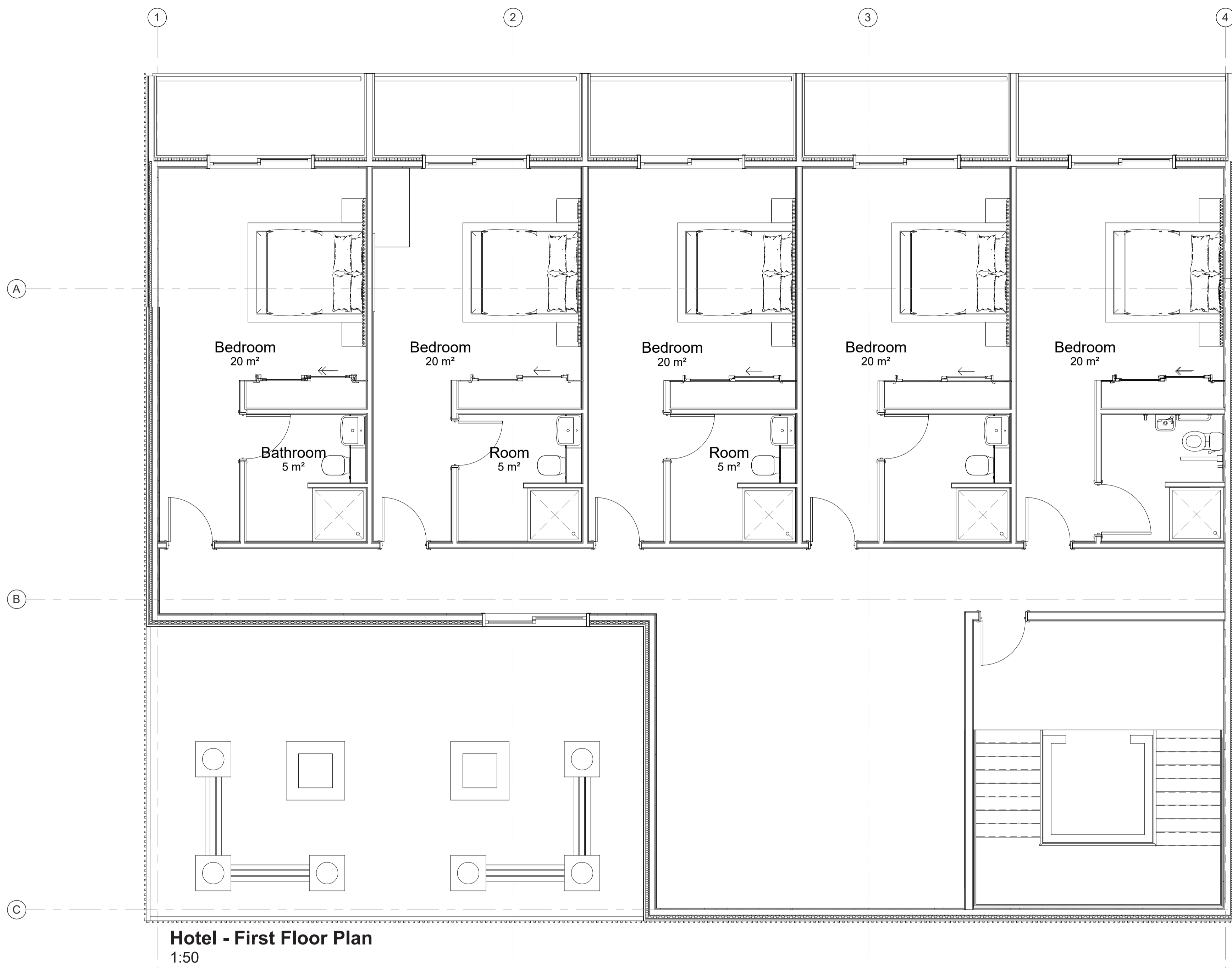
West Elevation

1 : 50

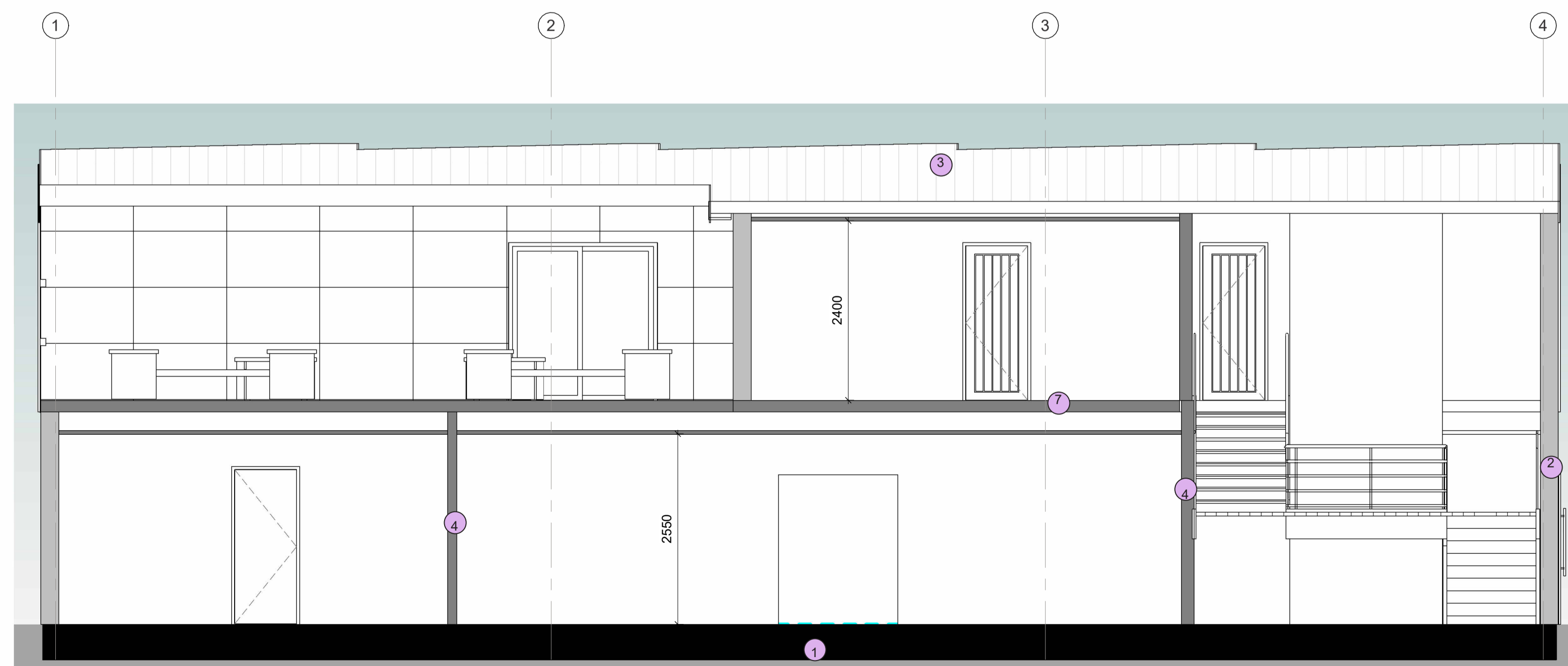


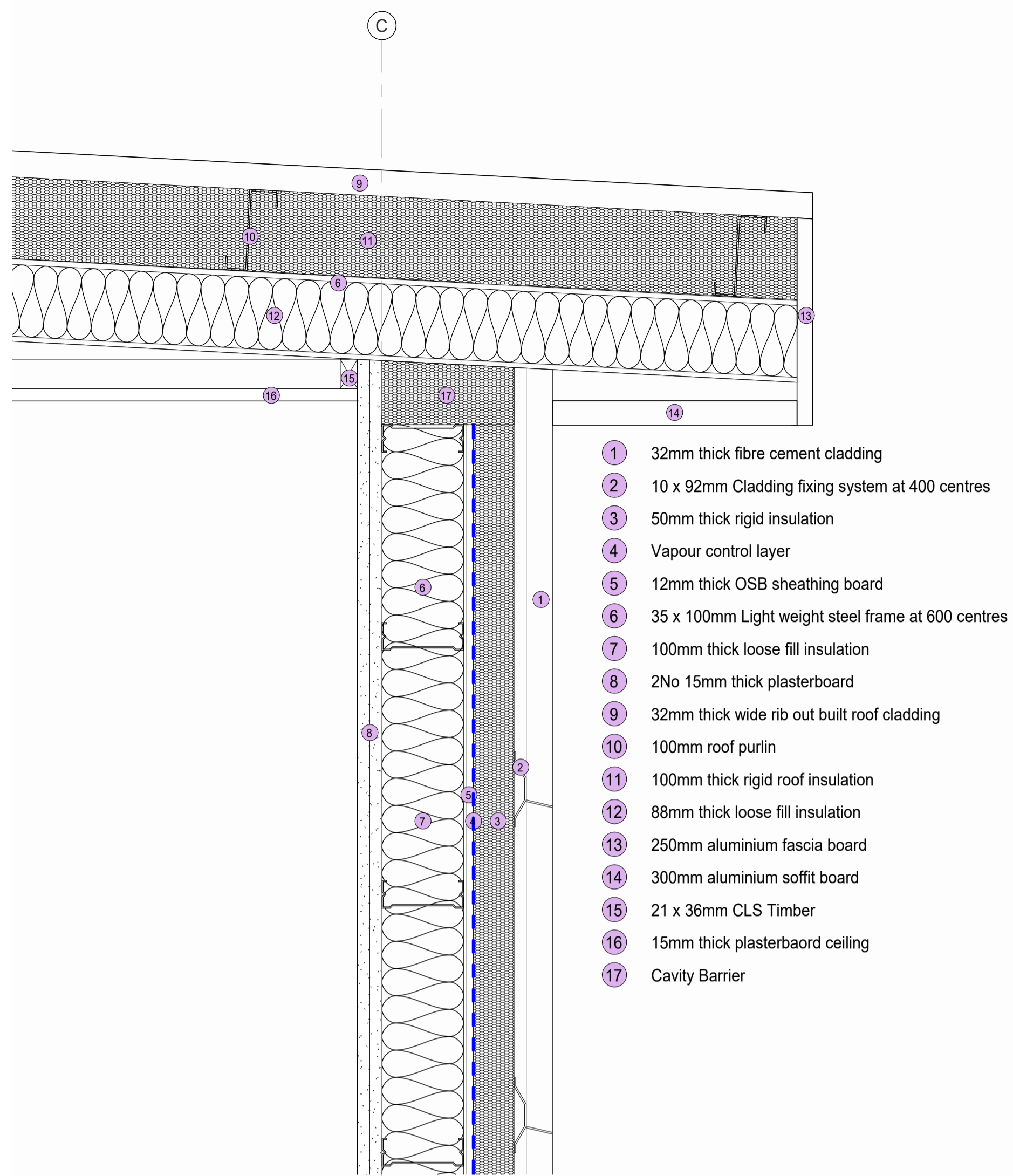
North Elevation

1 : 50



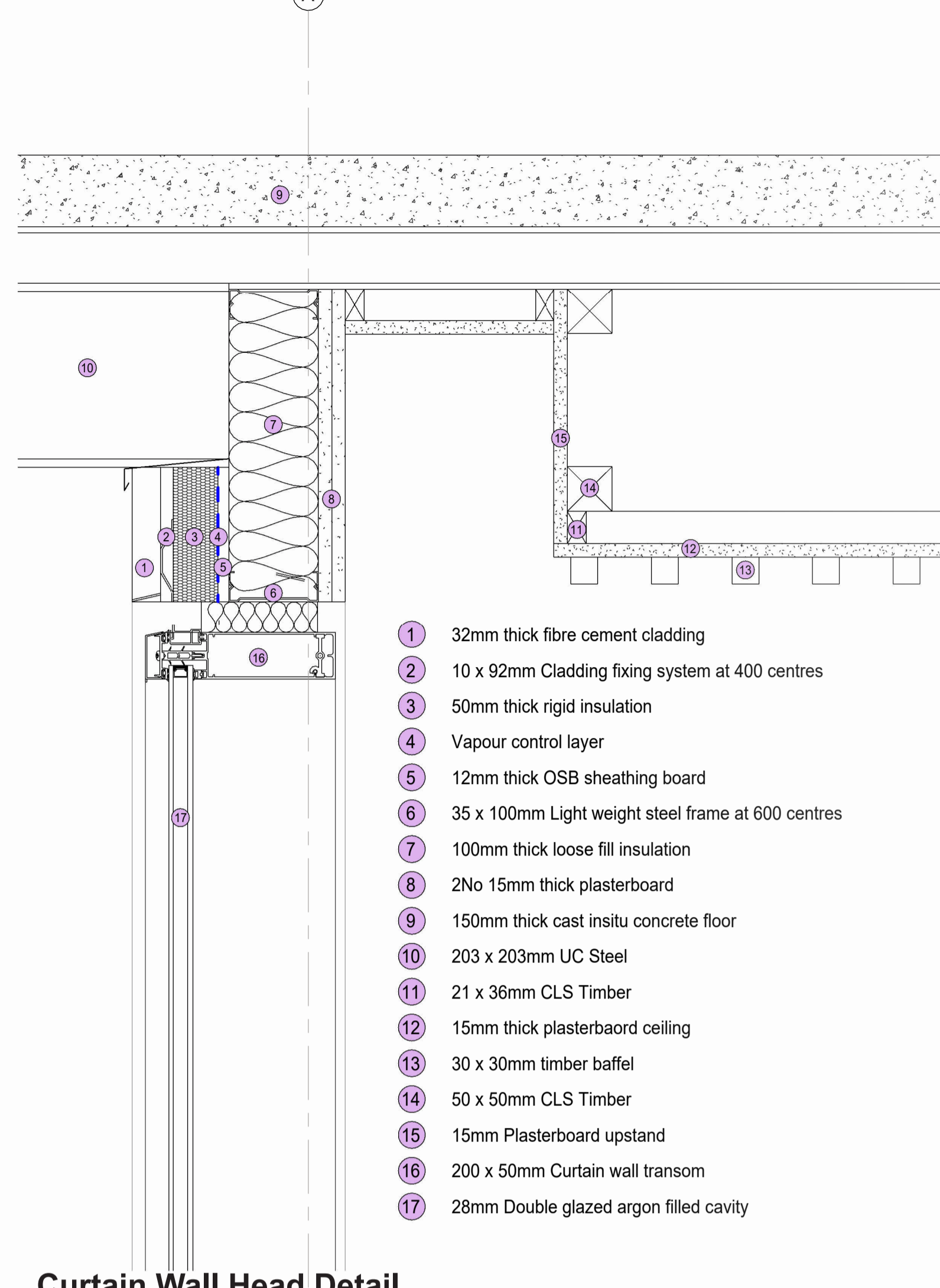
- 1 150mm thick cast insitu concrete floor, with 100mm thick insulation and 50mm screed
- 2 SFS external walls with fibre cement cladding facade
- 3 SFS roof system, 2 No. 100mm layers insulation warm roof and profiled steel clad external skin
- 4 Internal walls to be proprietary metal stud with 2No. layers plaster board either side
- 5 Floor to ceiling curtain wall system
- 6 Sliding door to balcony
- 7 First floor to be 150mm cast insitu concrete floor slab in metal profile





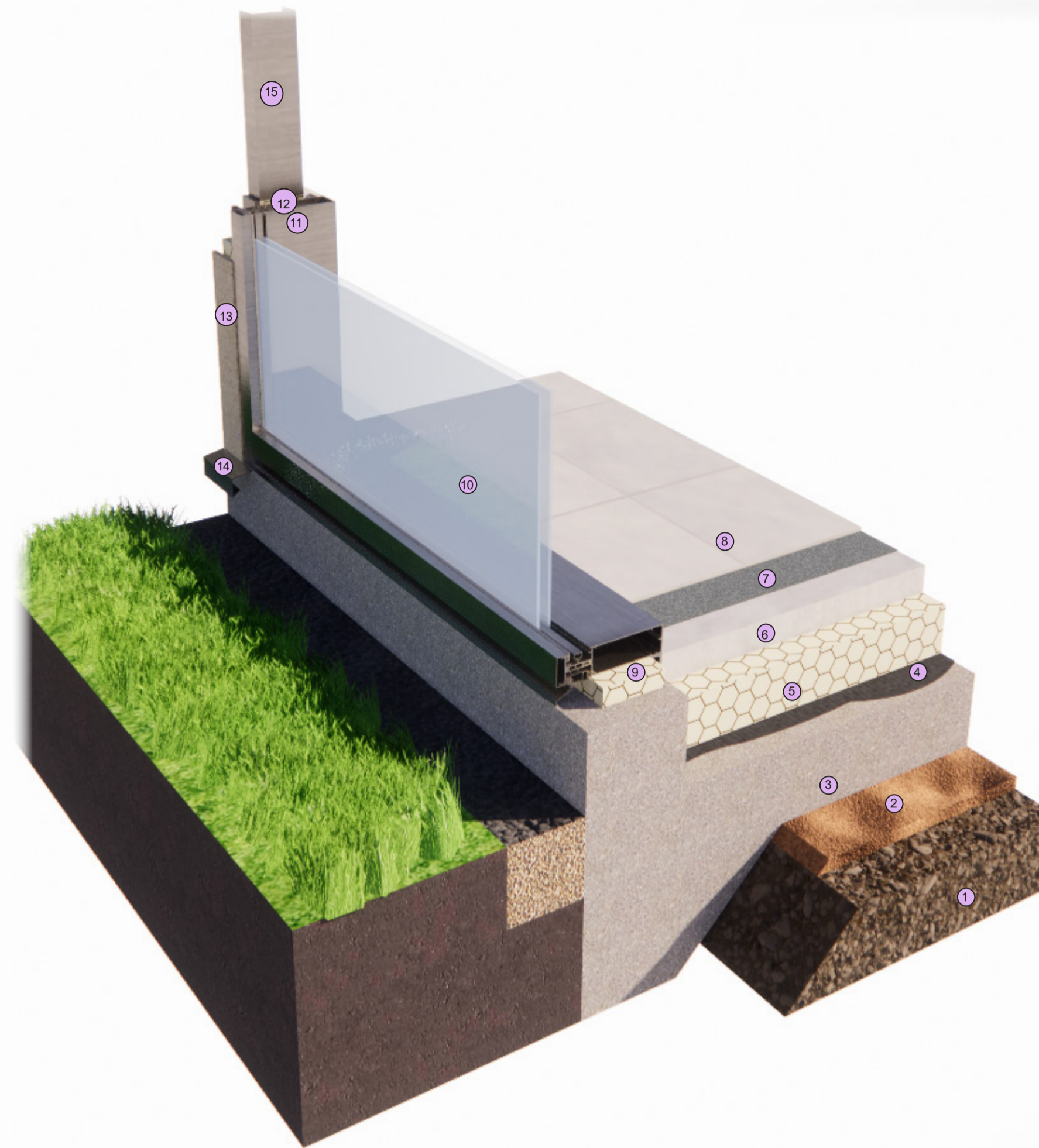
- 1 32mm thick fibre cement cladding
- 2 10 x 92mm Cladding fixing system at 400 centres
- 3 50mm thick rigid insulation
- 4 Vapour control layer
- 5 12mm thick OSB sheathing board
- 6 35 x 100mm Light weight steel frame at 600 centres
- 7 100mm thick loose fill insulation
- 8 2No 15mm thick plasterboard
- 9 32mm thick wide rib out built roof cladding
- 10 100mm roof purlin
- 11 100mm thick rigid roof insulation
- 12 88mm thick loose fill insulation
- 13 250mm aluminium fascia board
- 14 300mm aluminium soffit board
- 15 21 x 36mm CLS Timber
- 16 15mm thick plasterboard ceiling
- 17 Cavity Barrier

Roof - Wall Junction Detail
1:5



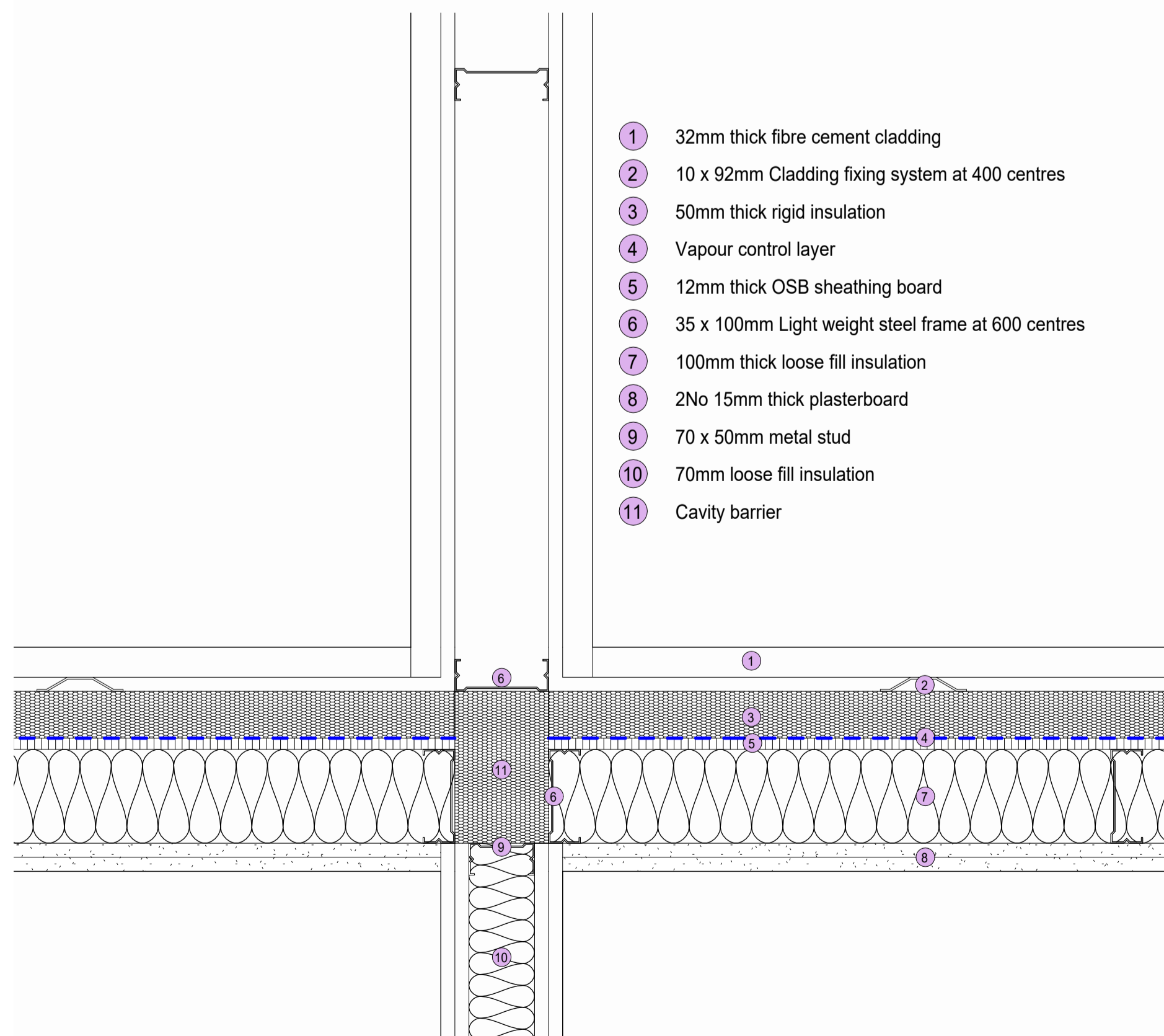
- 1 32mm thick fibre cement cladding
- 2 10 x 92mm Cladding fixing system at 400 centres
- 3 50mm thick rigid insulation
- 4 Vapour control layer
- 5 12mm thick OSB sheathing board
- 6 35 x 100mm Light weight steel frame at 600 centres
- 7 100mm thick loose fill insulation
- 8 2No 15mm thick plasterboard
- 9 150mm thick cast in situ concrete floor
- 10 203 x 203mm UC Steel
- 11 21 x 36mm CLS Timber
- 12 15mm thick plasterboard ceiling
- 13 30 x 30mm timber baffle
- 14 50 x 50mm CLS Timber
- 15 15mm Plasterboard upstand
- 16 200 x 50mm Curtain wall transom
- 17 28mm Double glazed argon filled cavity

Curtain Wall Head Detail
1:5



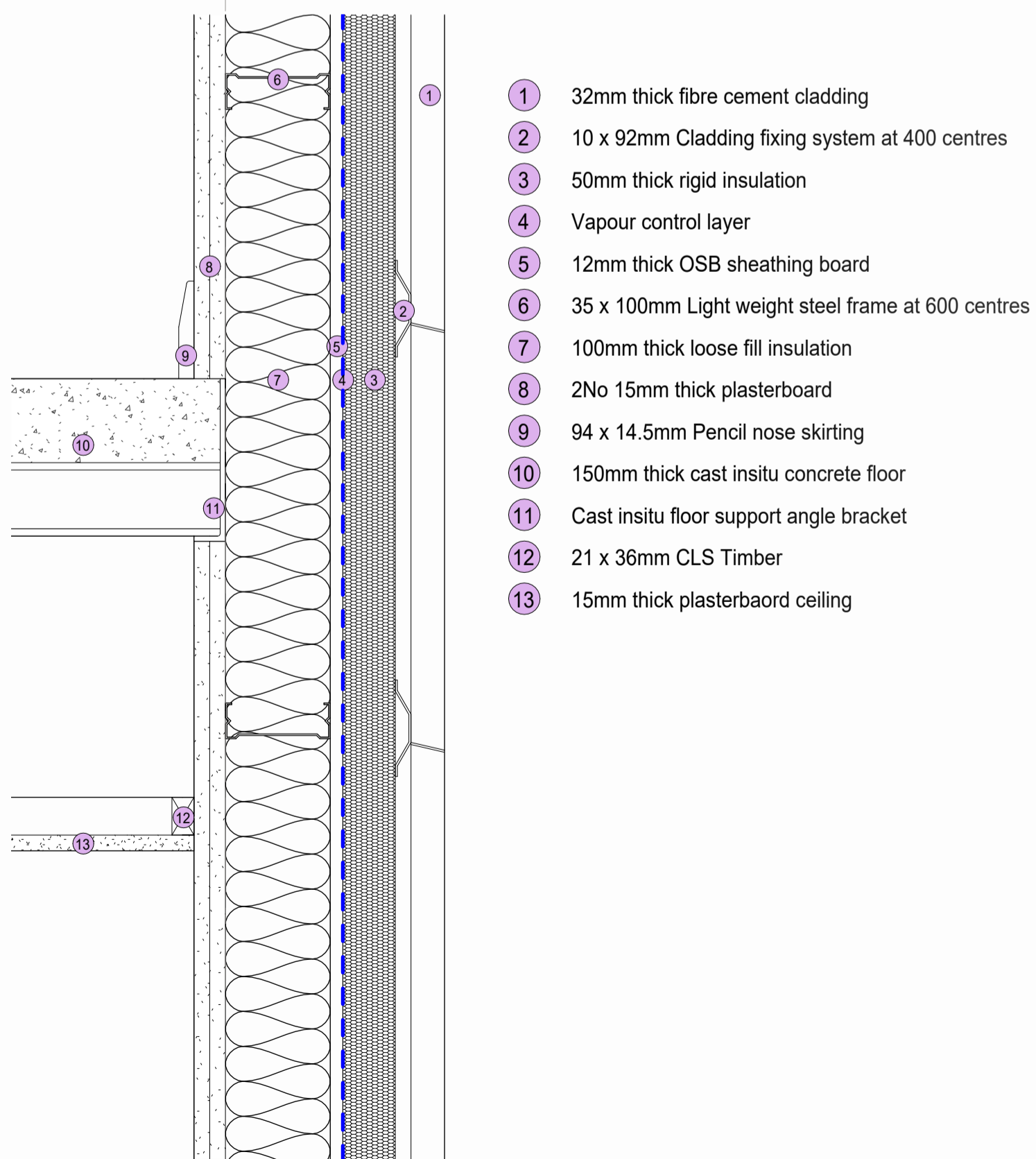
- 1 150mm thick MOT type 1 hardcore
- 2 25mm thick sand blinding
- 3 150mm reinforced cast in situ concrete
- 4 DPM lapped and taped at joints
- 5 100mm rigid insulation
- 6 50mm thick sand cement screed
- 7 Tile adhesive
- 8 900 x 600mm ceramic tiles
- 9 200 x 50mm Curtain wall transom
- 10 28mm Double glazing with argon filled cavity
- 11 200 x 50mm Curtain wall mullion
- 12 Rigid infill insulation
- 13 32mm thick fibre cement cladding
- 14 Polyester powder
- 15 35 x 100mm Light weight steel frame at 600 centres

Curtain Cill Head Detail
3D



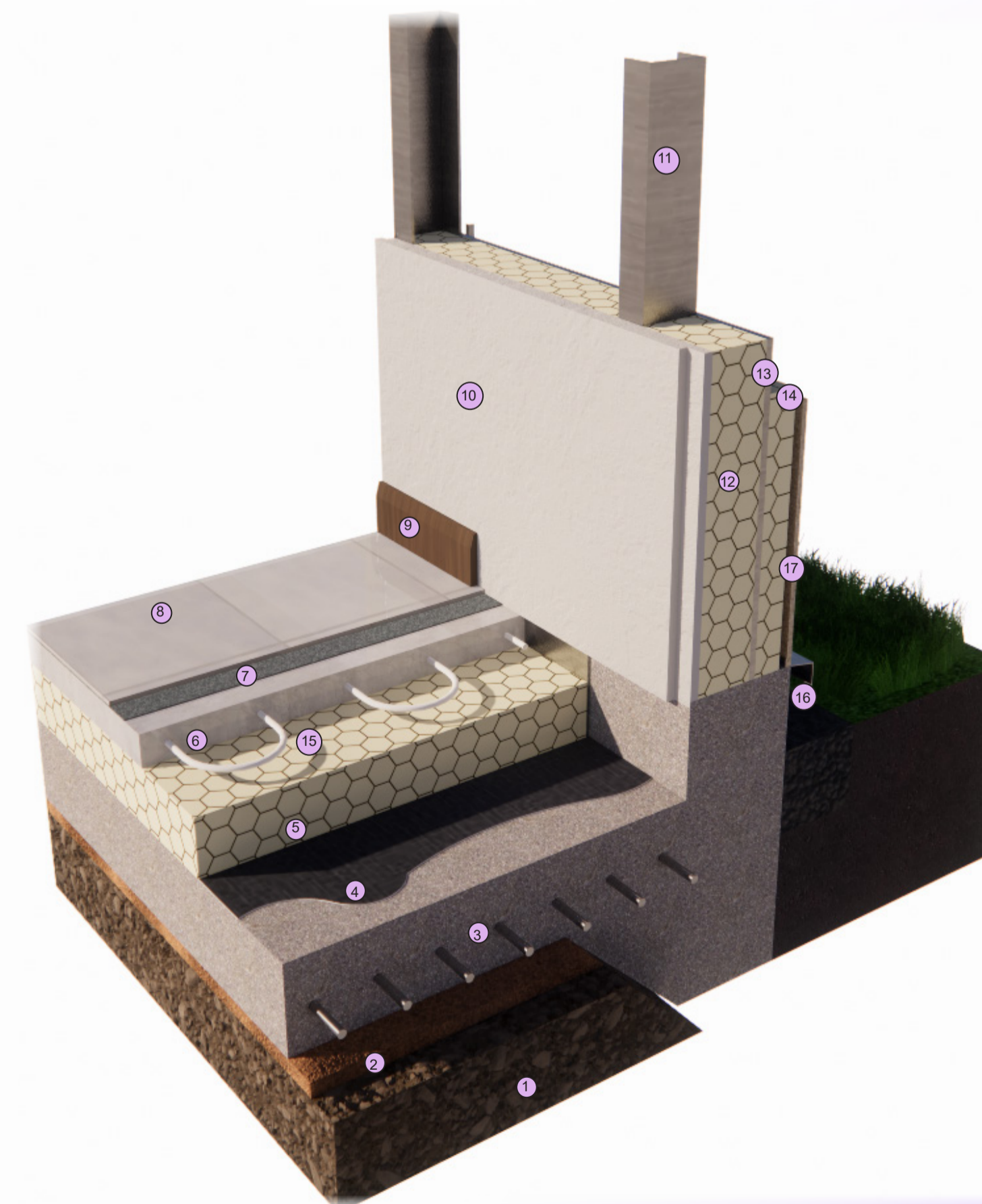
- 1 32mm thick fibre cement cladding
- 2 10 x 92mm Cladding fixing system at 400 centres
- 3 50mm thick rigid insulation
- 4 Vapour control layer
- 5 12mm thick OSB sheathing board
- 6 35 x 100mm Light weight steel frame at 600 centres
- 7 100mm thick loose fill insulation
- 8 2No 15mm thick plasterboard
- 9 70 x 50mm metal stud
- 10 70mm loose fill insulation
- 11 Cavity barrier

External Wall Junction Detail
1:5



- 1 32mm thick fibre cement cladding
- 2 10 x 92mm Cladding fixing system at 400 centres
- 3 50mm thick rigid insulation
- 4 Vapour control layer
- 5 12mm thick OSB sheathing board
- 6 35 x 100mm Light weight steel frame at 600 centres
- 7 100mm thick loose fill insulation
- 8 2No 15mm thick plasterboard
- 9 94 x 14.5mm Pencil nose skirting
- 10 150mm thick cast in situ concrete floor
- 11 Cast in situ floor support angle bracket
- 12 21 x 36mm CLS Timber
- 13 15mm thick plasterboard ceiling

External Wall - Intermedial Floor Junction Detail
1:5



- 1 150mm thick MOT type 1 hardcore
- 2 25mm thick sand blinding
- 3 150mm reinforced cast in situ concrete
- 4 DPM lapped and taped at joints
- 5 100mm rigid insulation
- 6 50mm thick sand cement screed
- 7 Tile adhesive
- 8 900 x 600mm ceramic tiles
- 9 94 x 14.5mm Pencil nose skirting
- 10 28mm Double glazing with argon filled cavity
- 11 35 x 100mm Light weight steel frame at 600 centres
- 12 100mm thick loose fill insulation
- 13 12mm thick OSB sheathing board
- 14 50mm thick rigid insulation
- 15 Underfloor heating coil
- 16 32mm thick fibre cement cladding

External Wall - Ground Floor Junction Detail
3D