

Grótagjá Caves

Davina Briggs

Site Plan Key

- | | |
|---------------------------------|------------------------------|
| 1. Hotel | 8. Carpark 2 |
| 2. Glamping pods | 9. Walking paths |
| 3. Visitor centre/viewing tower | 10. Access ramp |
| 4. Female cave | 11. Emergency vehicle access |
| 5. Male cave | 12. Plantroom |
| 6. Kitchen garden | 13. Wind turbines |
| 7. Carpark 1 | 14. Constructed wetland |



Grótagjá Caves Site



Hotel & Glamping Pods



Project Overview

Grjótagjá caves

The development of a visitor experience to the Grjótagjá caves in North-East Iceland.

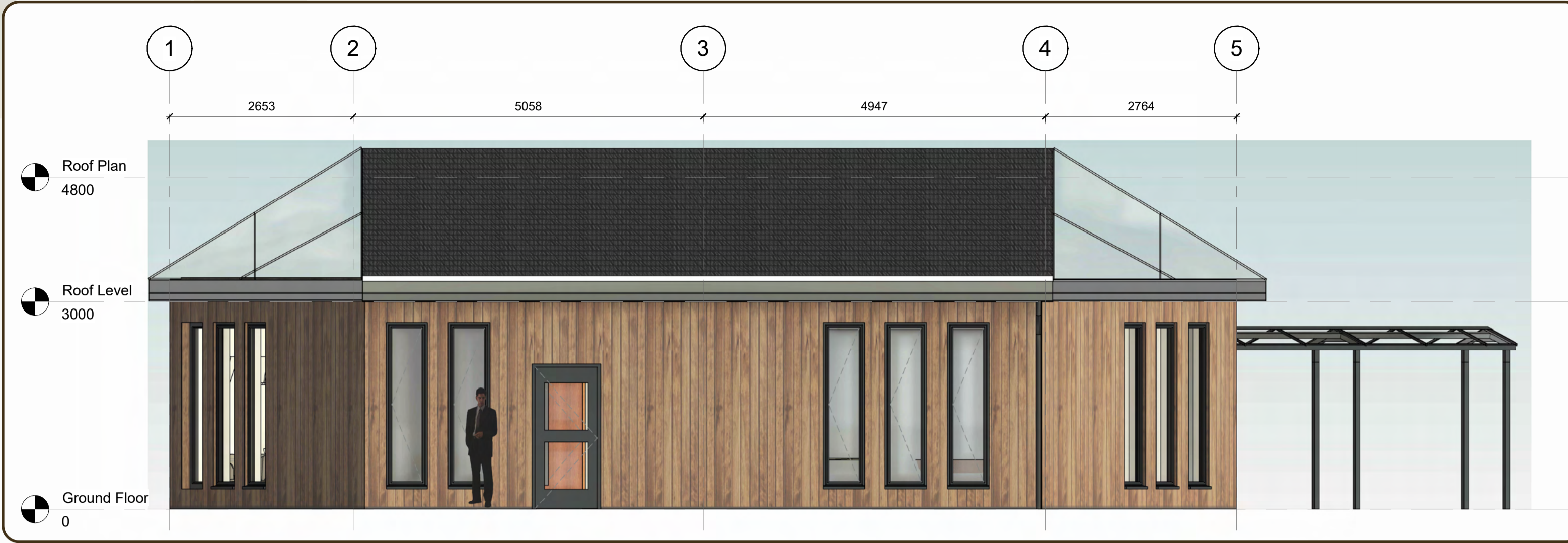
A luxury boutique hotel with five glamping pods and visitor centre with café and viewing tower. The hotel will be located at the Kvennagjá female cave and the visitor centre the Karlagjá male cave.

Access to the site is via a central entrance road leading to two separate carparks (one for each experience). Landscaping will guide visitors to their intended attraction along galvanised steel walkways through an attractive planting scheme which will be lit with high level and bollard LED lighting.

The biodiversity of the area will be increased through the introduction of native plants and trees to provide habitat for wildlife; and a small kitchen garden for the hotel. The glamping pods will also be partially covered with turf and green roofs with be on the small substations.

The hotel and visitor centre will be constructed from Glulam timber frames with pre-fabricated charred timber clad walls, storm resistant metal roof tiles and ground bearing concrete slab floors with pad foundations. The glamping pods will be fully pre-fabricated offsite and sit on galvanised steel skids bolted to the ground.

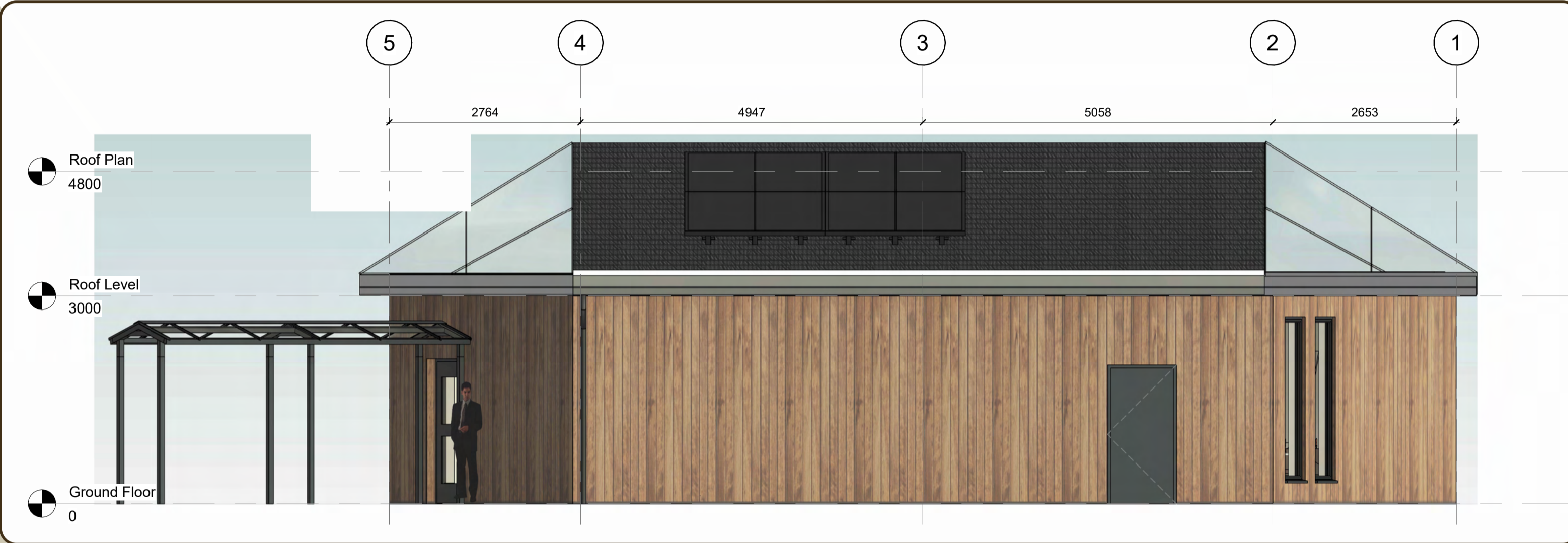
North Elevation



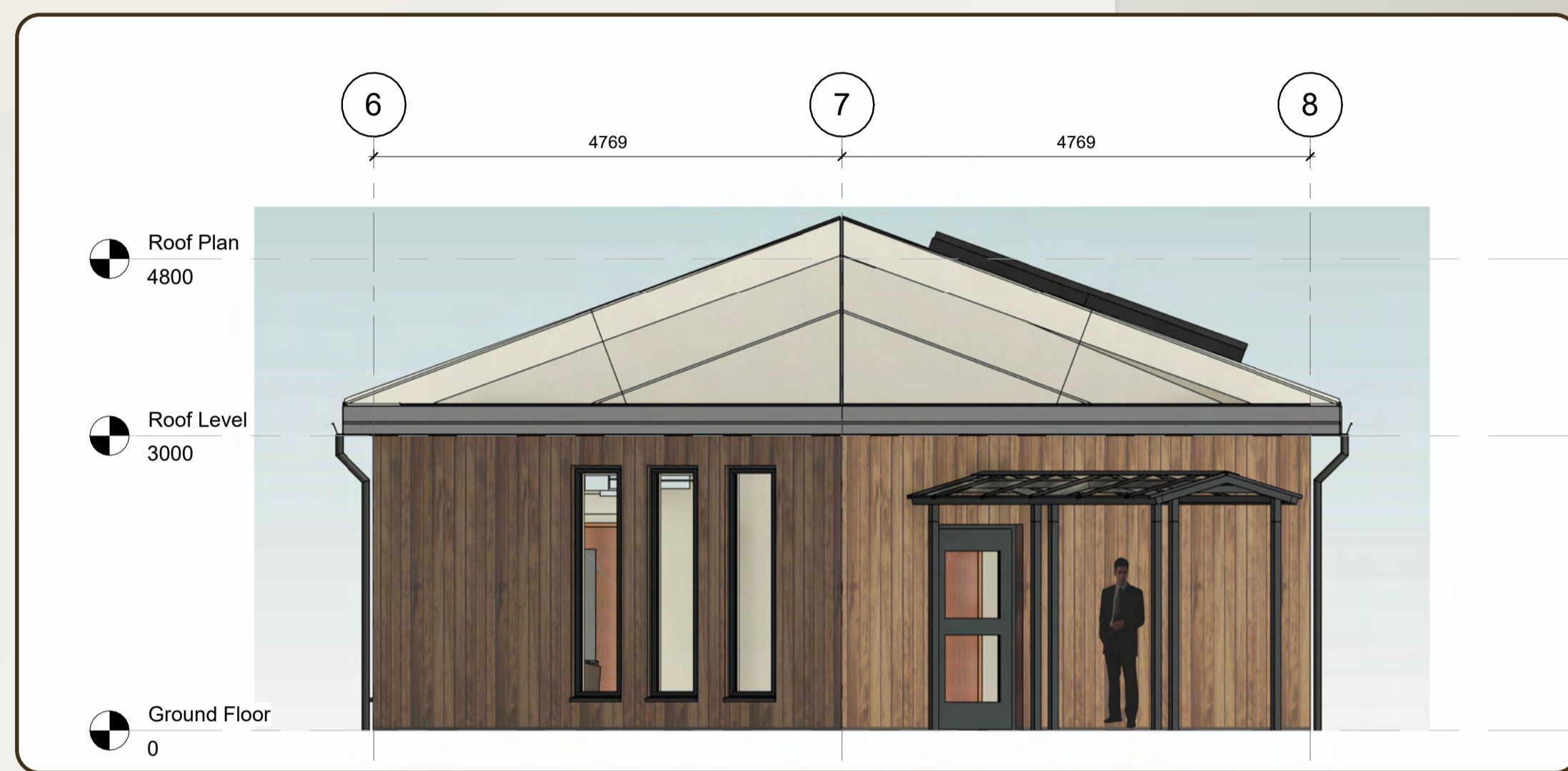
East Elevation



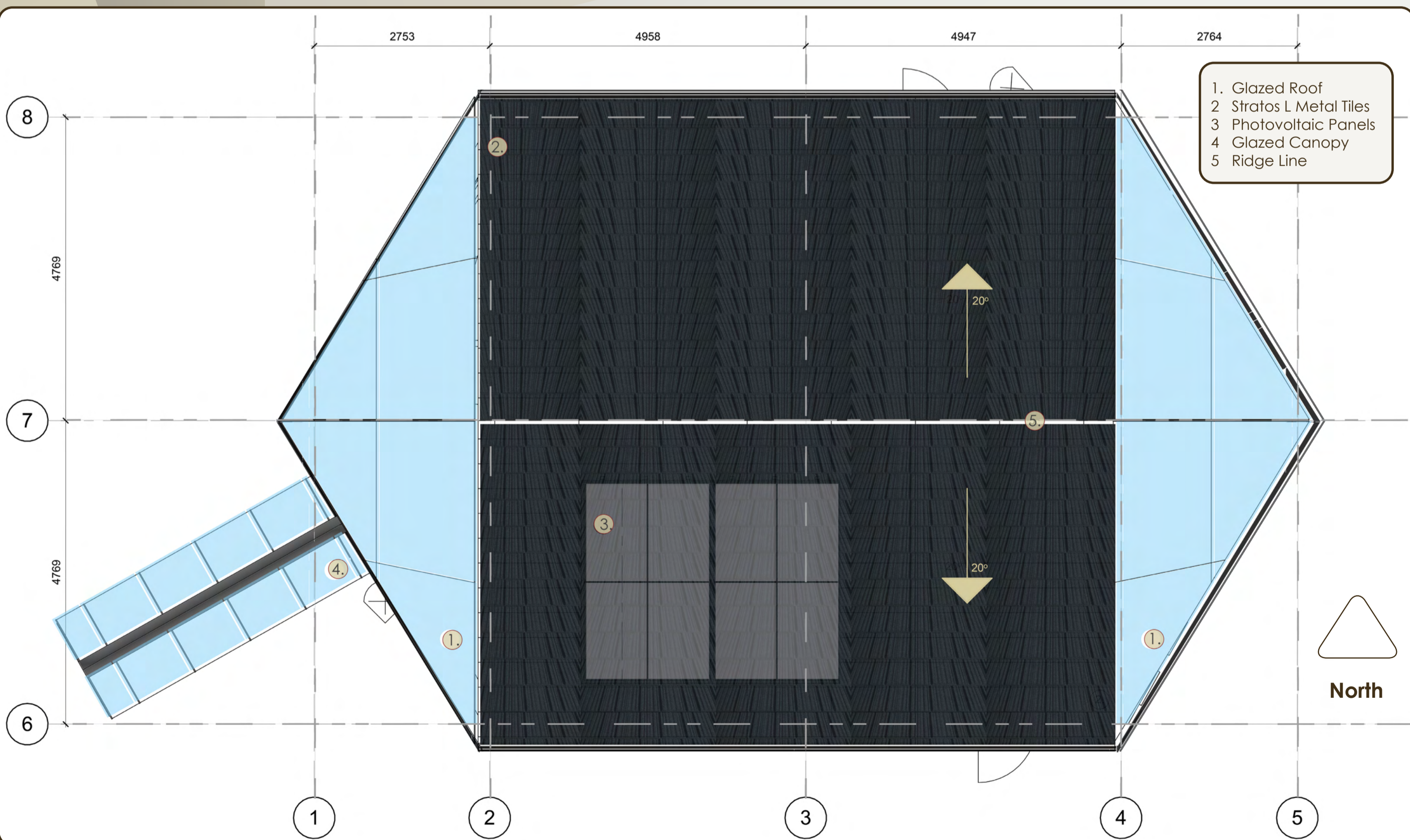
South Elevation



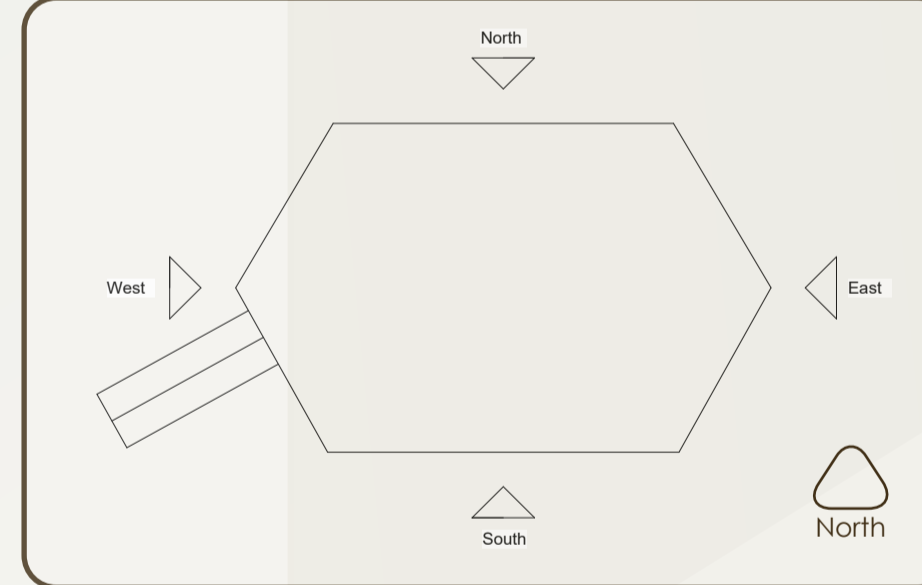
West Elevation



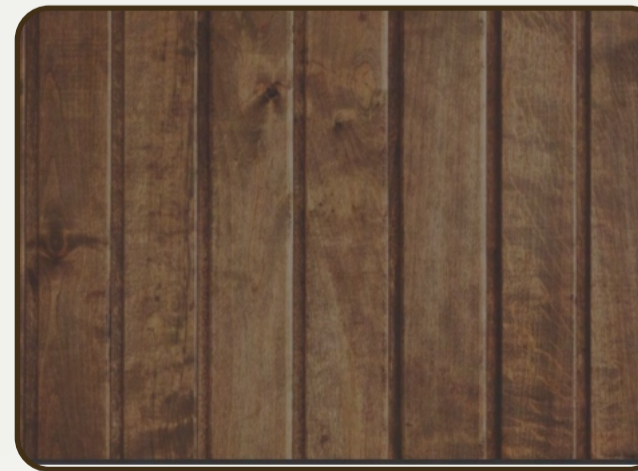
Roof Plan



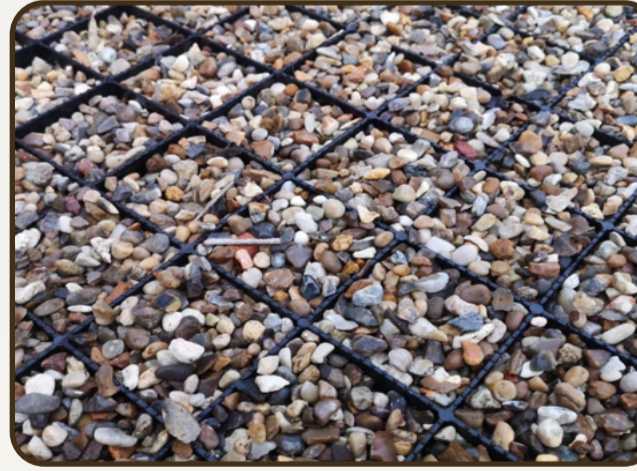
Elevations & Roof Plan
Scale 1:50 @ A1



Elevation Key



Charred timber cladding



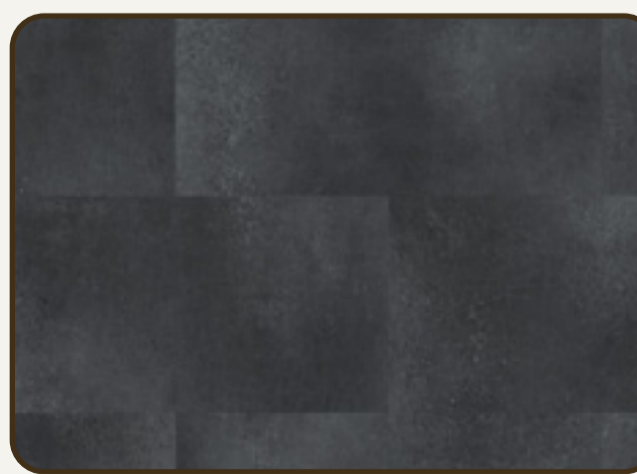
Gravel blocks for access road



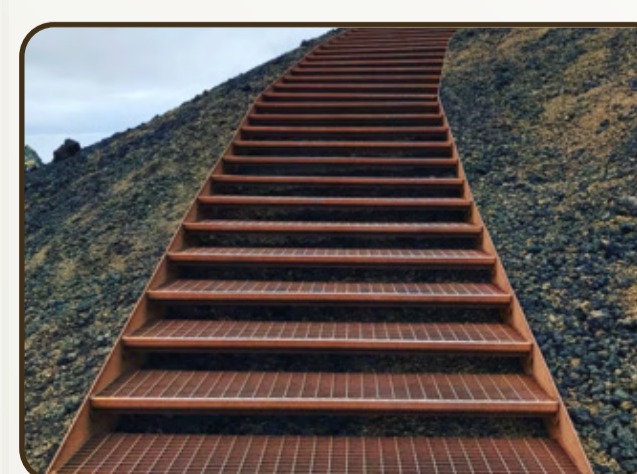
Stratos L metal roof tiles



Glulam timber frame



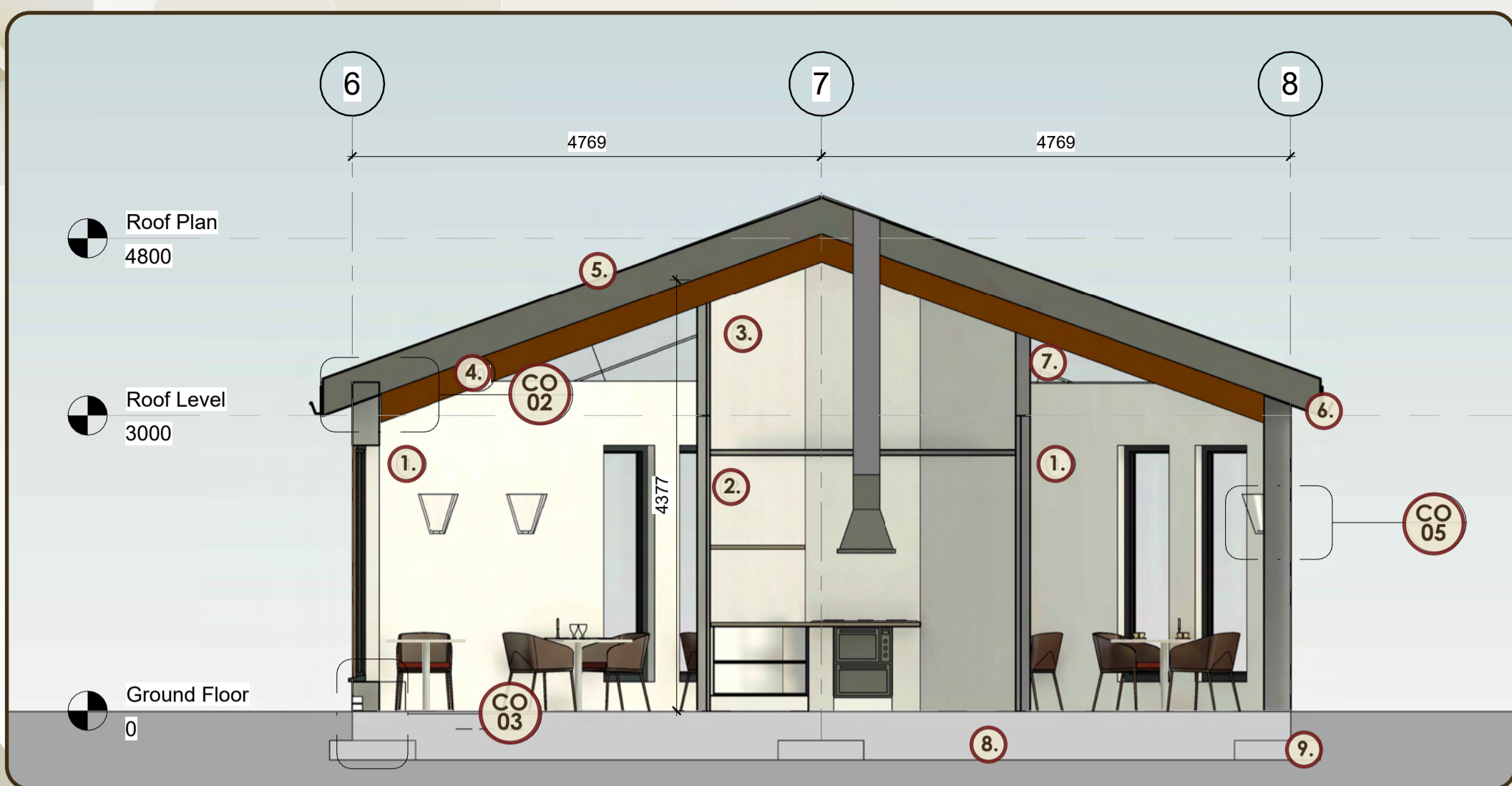
Lava rock floor tiles



Galvanised steel walkway

Materials

Section 1

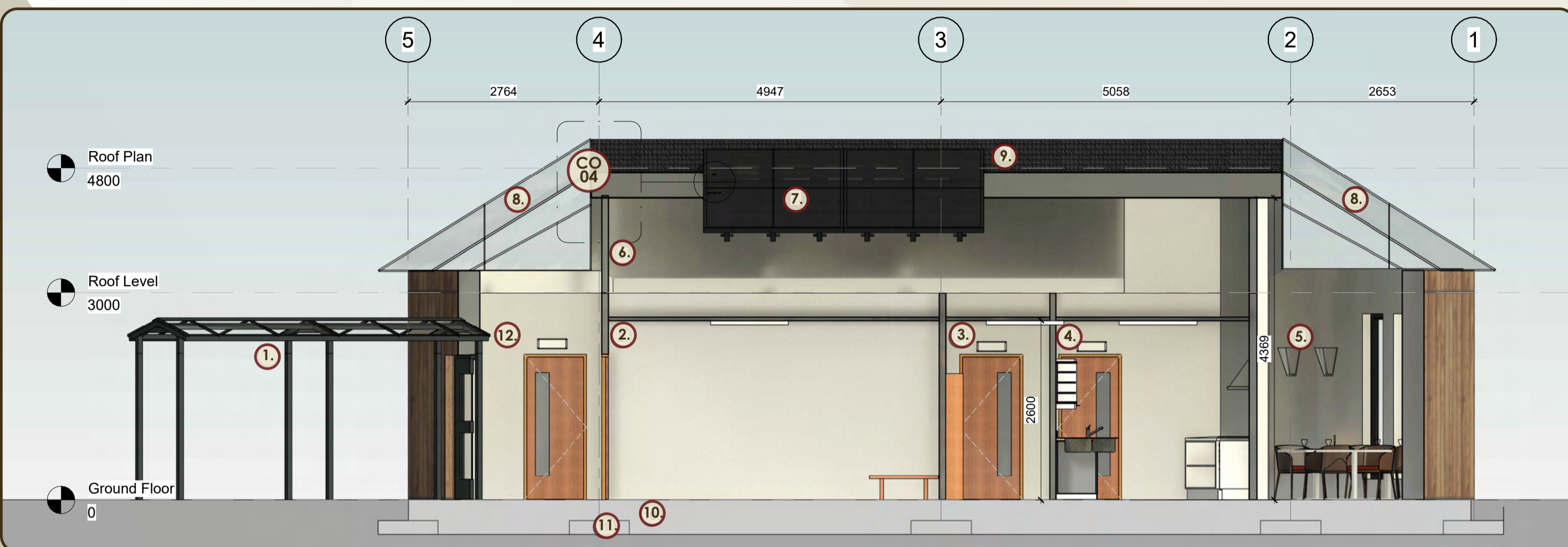


Ground Floor Sections
Scale 1:50 @ A1



- Section 1
- 1 Restaurant
 - 2 Kitchen
 - 3 Ceiling void above suspended ceiling
 - 4 Glulam timber frame
 - 5 Decra Stratos L metal roof tiles
 - 6 Gutter, soffit & fascia
 - 7 Glazed roof section
 - 8 Ground bearing concrete slab floor
 - 9 Concrete pad foundation

Section 2



- Section 2
- 1 Glass walkway entrance to cave
 - 2 Changing rooms
 - 3 Store room
 - 4 Kitchen
 - 5 Restaurant
 - 6 Ceiling void above suspended ceiling
 - 7 Photovoltaic solar panels
 - 8 Glazed roof
 - 9 Decra Stratos L metal roof tiles
 - 10 Ground bearing concrete slab floor
 - 11 Concrete pad foundation
 - 12 Entrance lobby to the cave

Ground Floor Plan



3D Interior Visuals

Restaurant



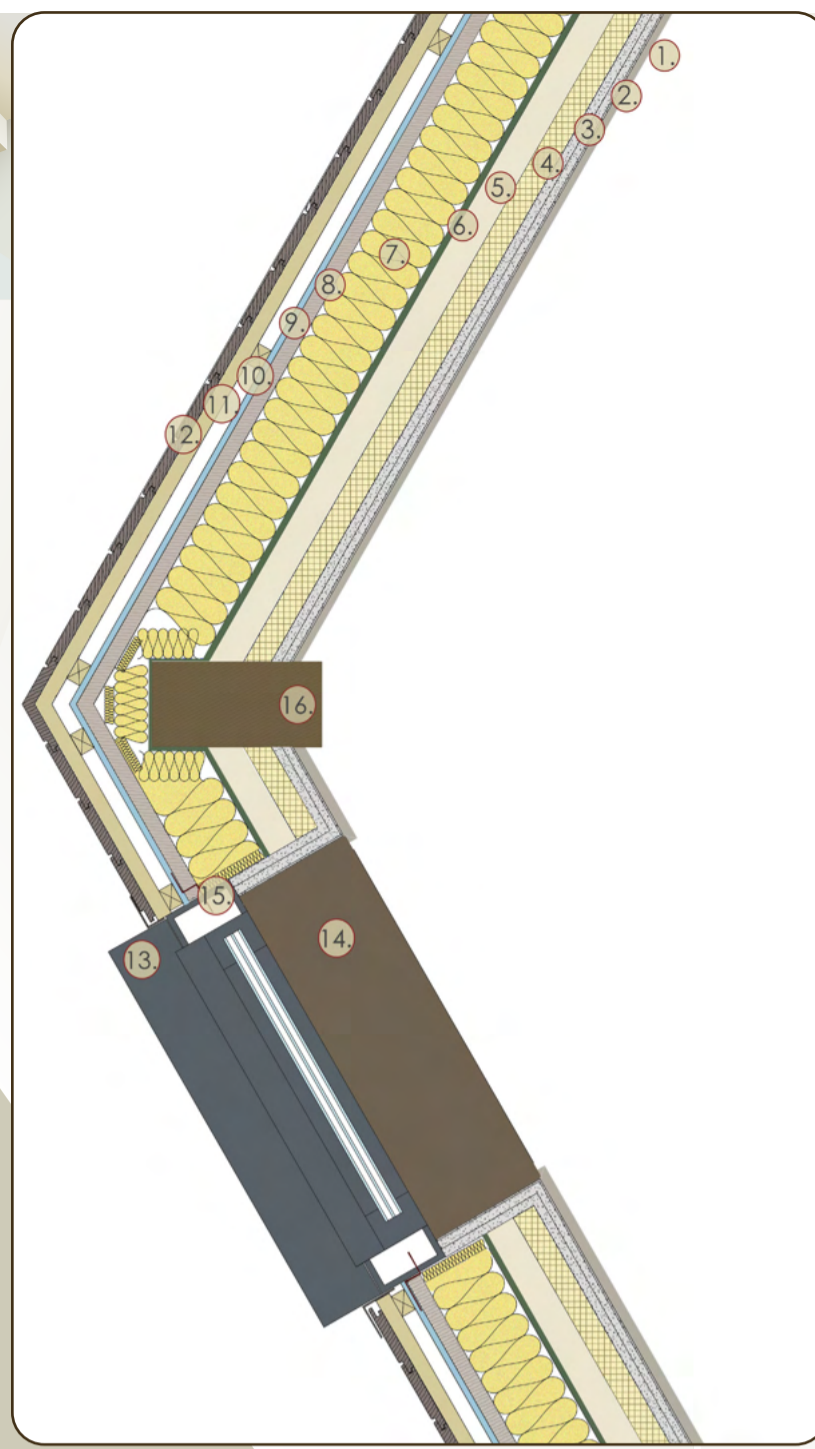
Waiting Area



Reception Area



Callout 1

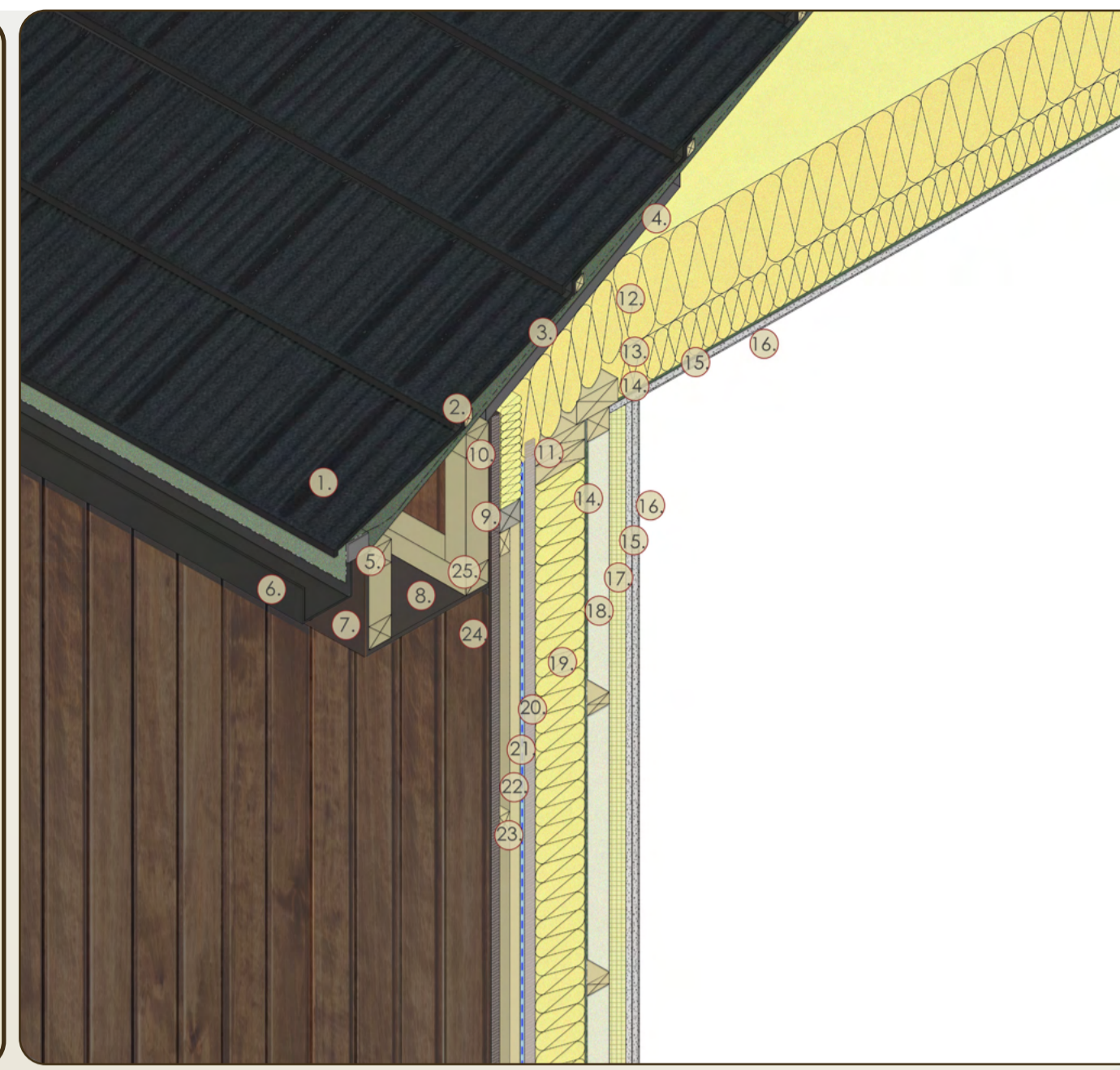


Details
Scale 1:5 @ A1



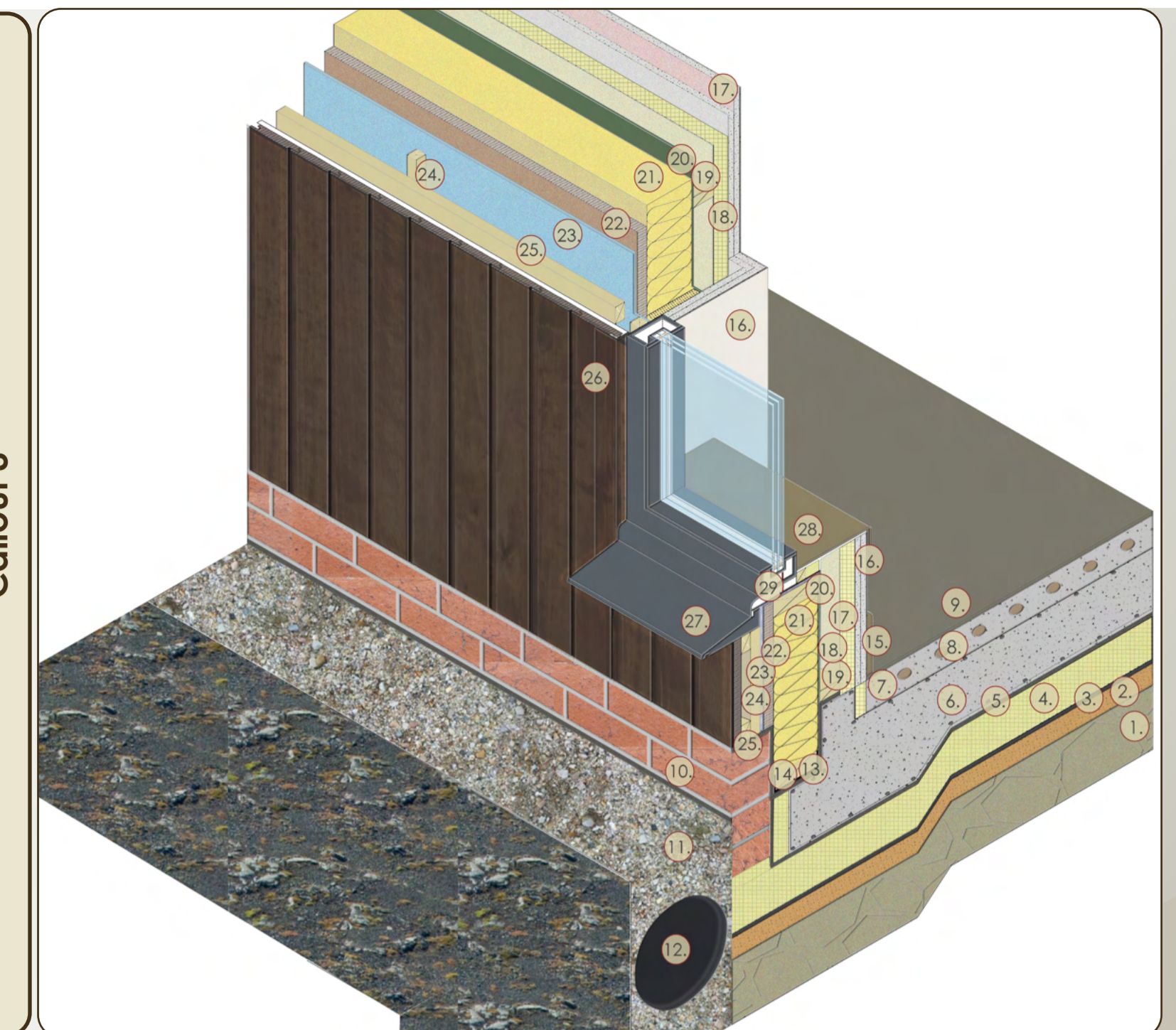
1. 150mm x 25mm redwood timber skirting board with varnish finish
2. 3mm plaster skim with 360 recycled paint finish
3. 15mm fireline plasterboard for fire and acoustic performance
4. 50mm rigid insulation attached to 15mm plasterboard
5. 50mm service void with 25mm x 50mm c3 timber stud @ 600mm centres
6. vapour barrier
7. 120mm PIR insulation board in stud wall @ 600mm centres
8. 25mm exterior grade ply
9. breather membrane
10. 25mm x 40mm vertical c4 timber battens @ 600mm centres
11. 25mm x 40mm horizontal c4 timber battens @ 600mm centres
12. 120mm x 20mm charred cedar tongue and groove timber cladding fixed with stainless steel screws
13. 600mm x 2400mm aluminium framed triple glazed window
14. 25mm redwood timber sill with varnish finish
15. window EDPM
16. 280 X 140mm glulam timber frame coated with 30 minute Thermoguard fire retardant varnish

Callout 2



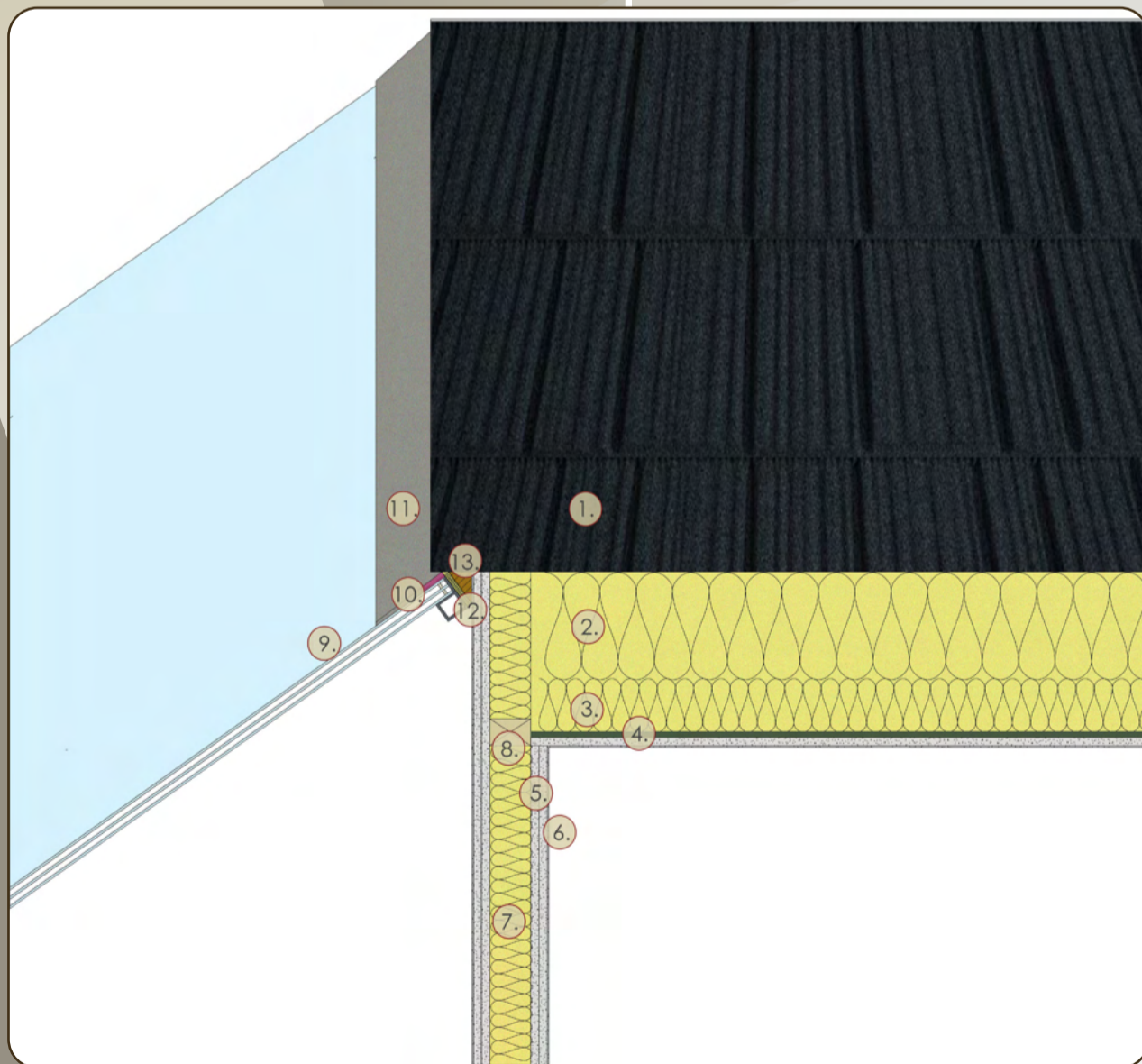
1. 1340m x 410m Decra Stratos L metal roof tiles
2. 25mm x 25mm c4 timber battens
3. roof felt underlay
4. 650mm ventilation tray
5. ventilation strip
6. 110mm aluminium guttering
7. 300mm uPVC fascia
8. 250mm uPVC soffit
9. 50mm x 50mm cavity closer
10. 50mm mineral wool insulation
11. 120mm x 50mm c4 timber battens
12. 200mm mineral wool insulation
13. 100mm mineral wool insulation
14. vapour barrier
15. 15mm fireline plasterboard for fire and acoustic performance
16. 3mm plaster skim with 360 recycled paint finish
17. 120mm PIR insulation board in stud wall @ 600mm centres
18. 50mm service void with 25mm x 50mm c3 timber stud @ 600mm centres
19. 20mm insulation board in timber stud wall @ 600mm centres
20. 25mm exterior grade ply
21. breather membrane
22. 25mm x 40mm vertical c4 timber battens @ 600mm centres
23. 25mm x 40mm horizontal c4 timber battens @ 600mm centres
24. 120mm x 20mm charred cedar tongue and groove timber cladding fixed with stainless steel screws
25. 50mm x 50mm c4 timber soffit and fascia support box fixed to rafters

Callout 3



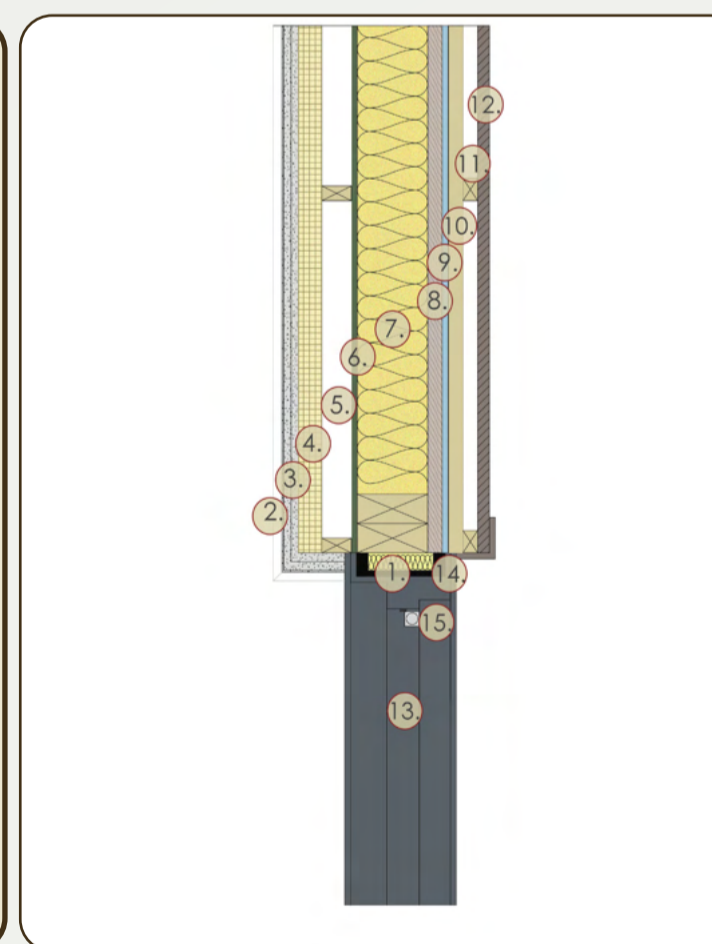
1. 150mm hardcore
2. 50mm blinding sand
3. damp proof membrane
4. 100mm rigid insulation
5. separation layer
6. 150 mm reinforced concrete
7. 75mm sand & cement levelling screed
8. under floor heating pipework
9. floor covering
10. engineering brick
11. gravel for drainage
12. 250mm perforated French drain
13. stainless steel sole plate for timber batten
14. 120mm x 50mm c4 timber batten
15. 50mm x 25mm redwood timber skirting board with varnish finish
16. 3mm plaster skim with 360 recycled paint finish
17. 15mm fireline plasterboard for fire and acoustic performance
18. 50mm rigid insulation attached to 15mm plasterboard
19. 50mm service void with 25mm x 50mm c3 timber stud @ 600mm centres
20. vapour barrier
21. 120mm PIR insulation board in stud wall @ 600mm centres
22. 25mm exterior grade ply
23. breather membrane
24. 25mm x 40mm vertical c4 timber battens @ 600mm centres
25. 25mm x 40mm horizontal c4 timber battens @ 600mm centres
26. 120mm x 20mm charred cedar tongue and groove timber cladding fixed with stainless steel screws
27. 600mm x 2400mm aluminium framed triple glazed window
28. 25mm redwood timber sill with varnish finish
29. window EDPM

Callout 4



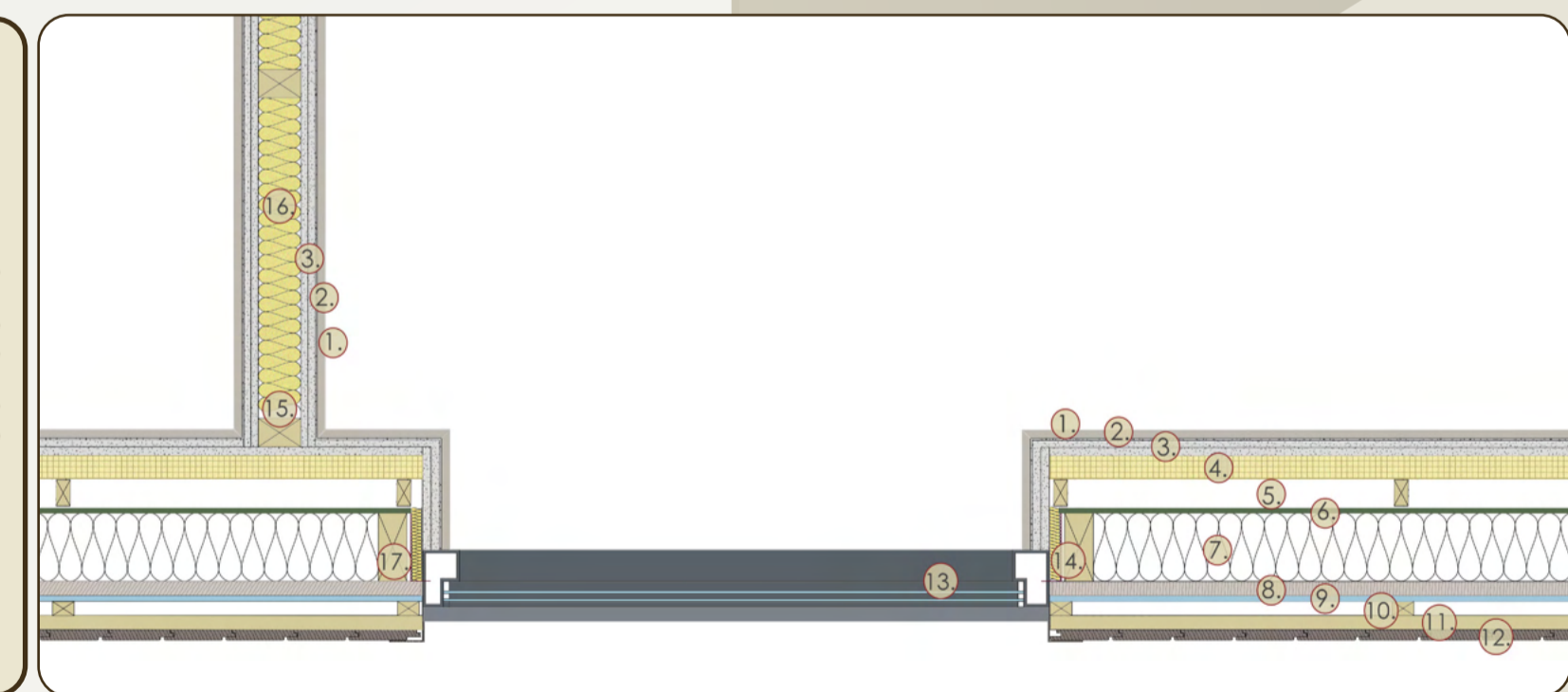
1. Decra Stratos L 1340mm x 410mm metal roof tiles
2. 200mm mineral wool insulation
3. 100mm mineral wool insulation
4. vapour barrier
5. 15mm fireline plasterboard for fire and acoustic performance
6. 3mm plaster skim with 360 recycled paint finish
7. 75mm mineral wool insulation
8. 25mm x 50mm c3 timber stud @ 600mm centres
9. aluminium frame triple glazed roof panel
10. window EPDM strip
11. 150mm aluminium window flashing
12. 10mm rigid insulation
13. 280mm x 140mm Glulam timber frame coated with 30 minute Thermoguard fire retardant varnish

Callout 5



1. 25mm fireproof insulation board
2. 3mm plaster skim with 360 recycled paint finish
3. 15mm fireline plasterboard for fire and acoustic performance
4. 50mm rigid insulation attached to 15mm plasterboard
5. 50mm service void with 25mm x 50mm c3 timber stud @ 600mm centres
6. vapour barrier
7. 120mm PIR insulation board in stud wall @ 600mm centres
8. 25mm exterior grade ply
9. breather membrane
10. 25mm x 40mm vertical c4 timber battens @ 600mm centres
11. 25mm x 40mm horizontal c4 timber battens @ 600mm centres
12. 120mm x 20mm charred cedar tongue and groove timber cladding fixed with stainless steel screws
13. steel 990mm wide fire exit door
14. intumescent sealant
15. metal release bar

Callout 6



1. 50mm x 25mm redwood timber skirting board with varnish finish
2. 3mm plaster skim with 360 recycled paint finish
3. 15mm fireline plasterboard for fire and acoustic performance
4. 50mm rigid insulation attached to 15mm plasterboard
5. 50mm service void with 25mm x 50mm c3 timber stud @ 600mm centres
6. vapour barrier
7. 120mm PIR insulation board in stud wall @ 600mm centres
8. 25mm exterior grade ply
9. breather membrane
10. 25mm x 40mm vertical c4 timber battens @ 600mm centres
11. 25mm x 40mm horizontal c4 timber battens @ 600mm centres
12. 120mm x 20mm charred cedar tongue and groove timber cladding fixed with stainless steel screws
13. aluminium framed glazed entrance door
14. door EDPM
15. 75 x 50mm timber stud frame @ 600mm centres
16. 75mm mineral wool insulation
17. 120mm x 50mm c4 timber batten